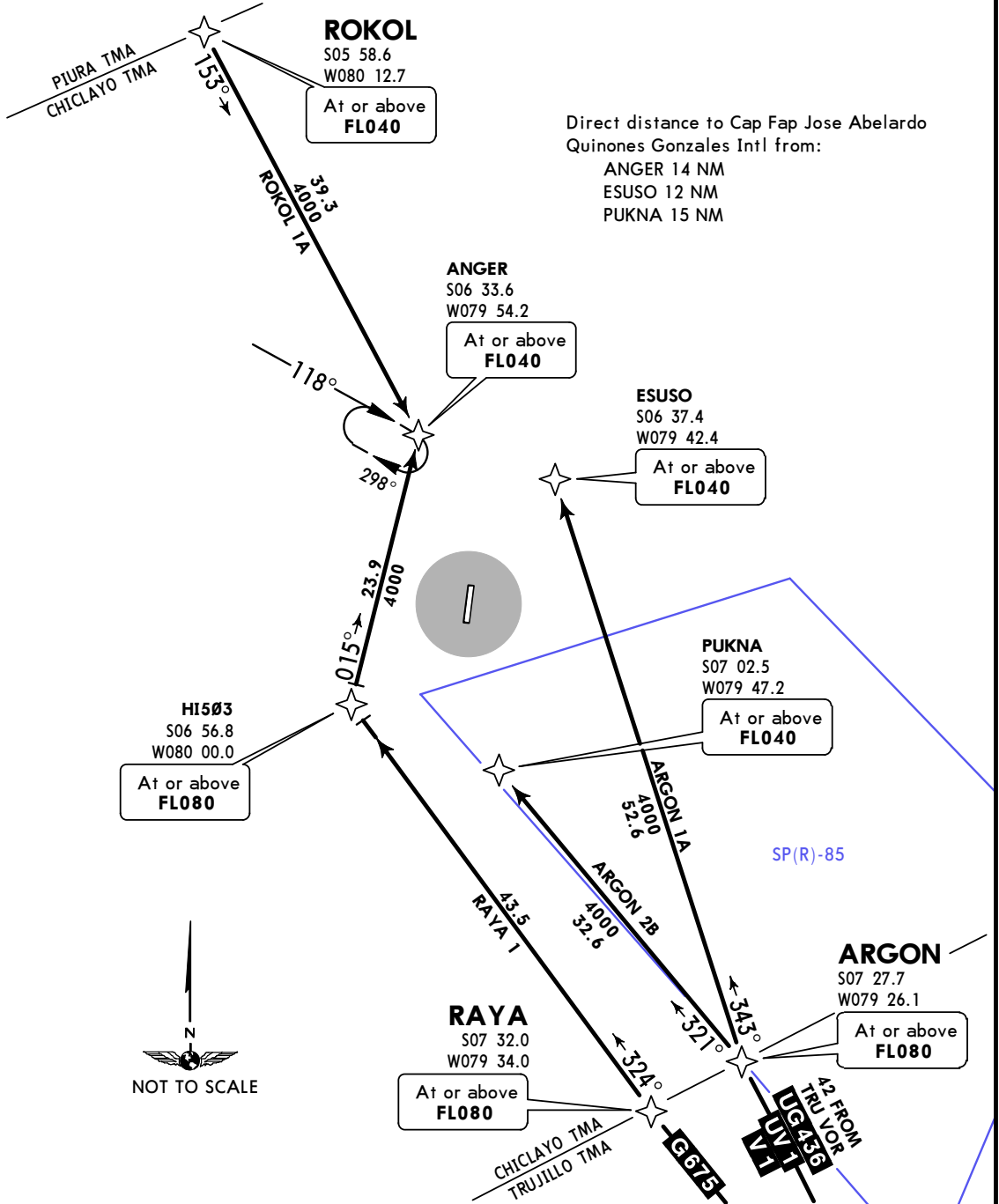


ATIS 132.5	Apt Elev 97'	Alt Set: hPa Trans level: By ATC Trans alt: 3000' 1. STAR RNP 1.0. 2. GNSS required. 3. ARGON 1A not applicable when SP(R)-85 is active.
---------------	-----------------	--

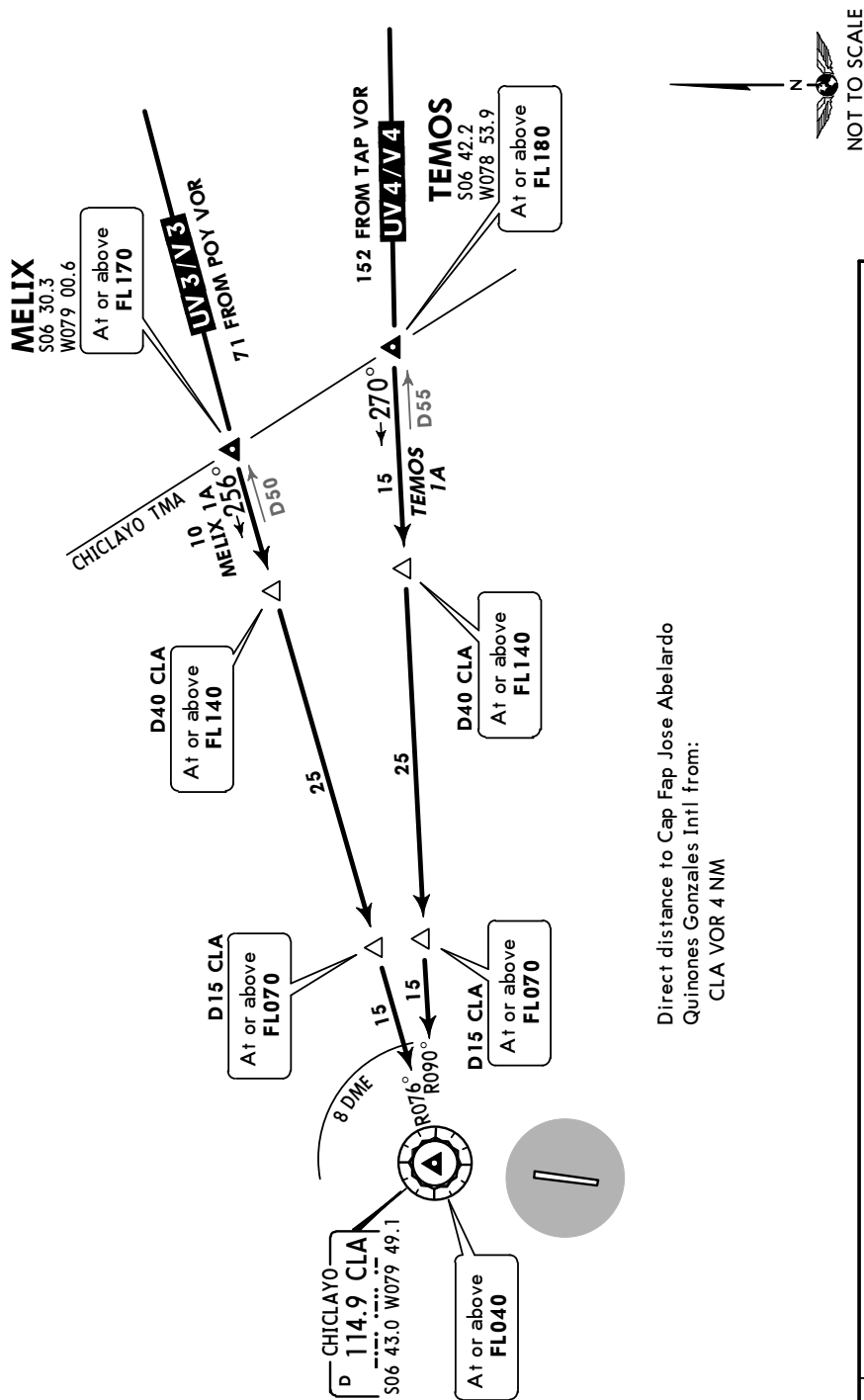
**ARGON 1A [ARGO1A], ARGON 2B [ARGO2B],
 RAYA 1 [RAYA1], ROKOL 1A [ROKO1A]
 RNAV ARRIVALS**



STAR	RWY	ROUTING
ARGON 1A	19	After ARGON, turn RIGHT to continue on track 343° to ESUSO, then according to ATC clearance.
ARGON 2B	01	After ARGON, turn LEFT to track 321° to PUKNA, then according to ATC clearance.
RAYA 1	19	After RAYA, turn RIGHT to track 324° to HI503, then turn RIGHT to track 015° to ANGER, then according to ATC clearance.
ROKOL 1A	19	After ROKOL, track 153° to ANGER, then according to ATC clearance.

ATIS 132.5	Apt Elev 97'	Alt Set: hPa Trans level: By ATC Trans alt: 3000'
---------------	-----------------	---

MELIX 1A [MEL11A], TEMOS 1A [TEM01A]
 ARRIVALS
 (RWY 19)

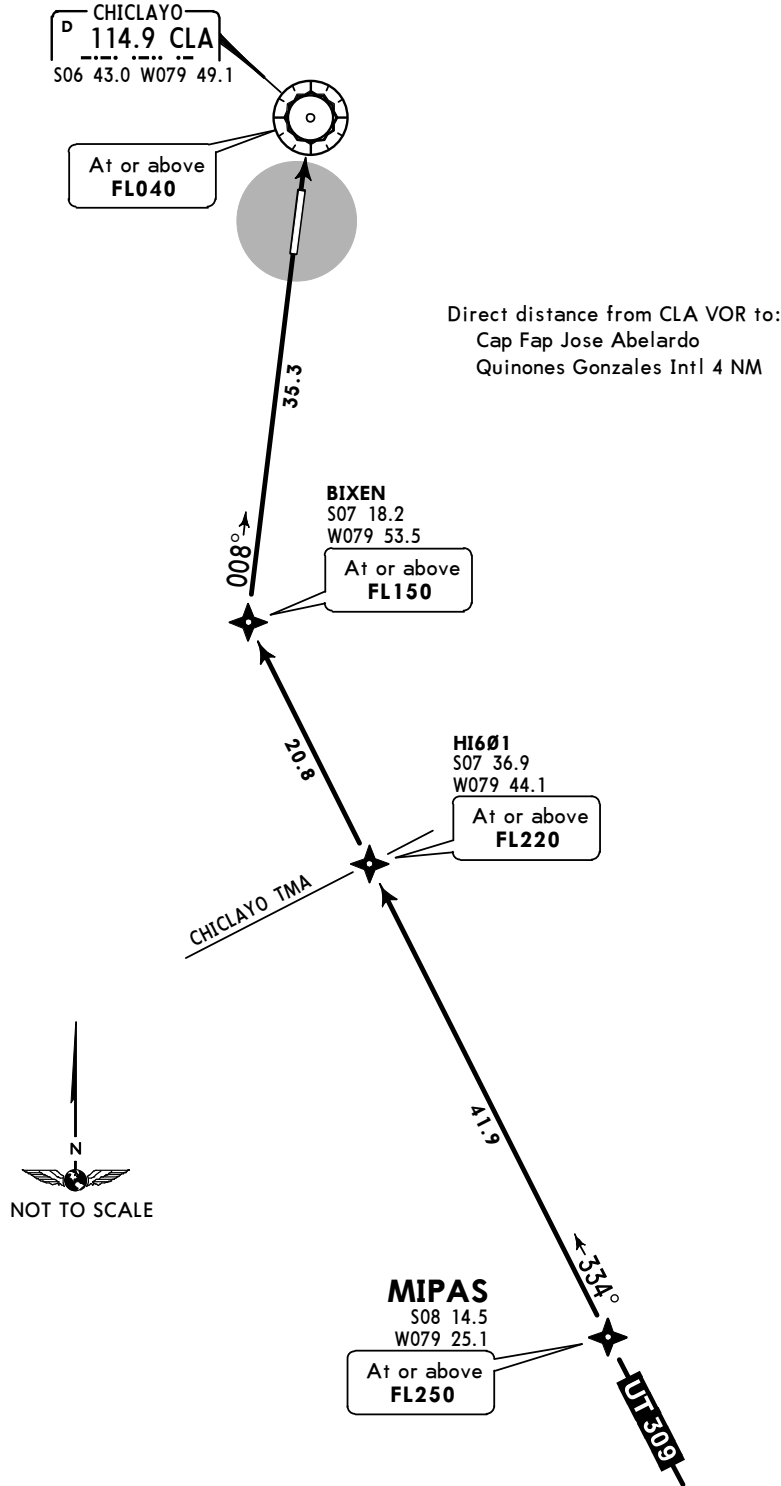


Direct distance to Cap Fap Jose Abelardo
 Quinones Gonzales Intl from:
 CLA VOR 4 NM

STAR	ROUTING
MELIX 1A	Descend from route UV-3/V-3 to CLA VOR and proceed in accordance with ATC authorization.
TEMOS 1A	Descend from route UV-4/V-4 to CLA VOR and proceed in accordance with ATC authorization.

ATIS 132.5	Apt Elev 97'	Alt Set: hPa Trans level: By ATC Trans alt: 3000' 1. GNSS required. 2. RNP 1 approval required.
----------------------	------------------------	---

MIPAS 1 RNAV (GNSS) ARRIVAL
 [MIPAS1]
 (RWY 19)



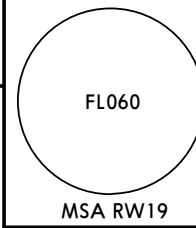
ROUTING

Descend on route UT-309 to MIPAS, then continue via BIXEN to CLA VOR according to ATC instructions.

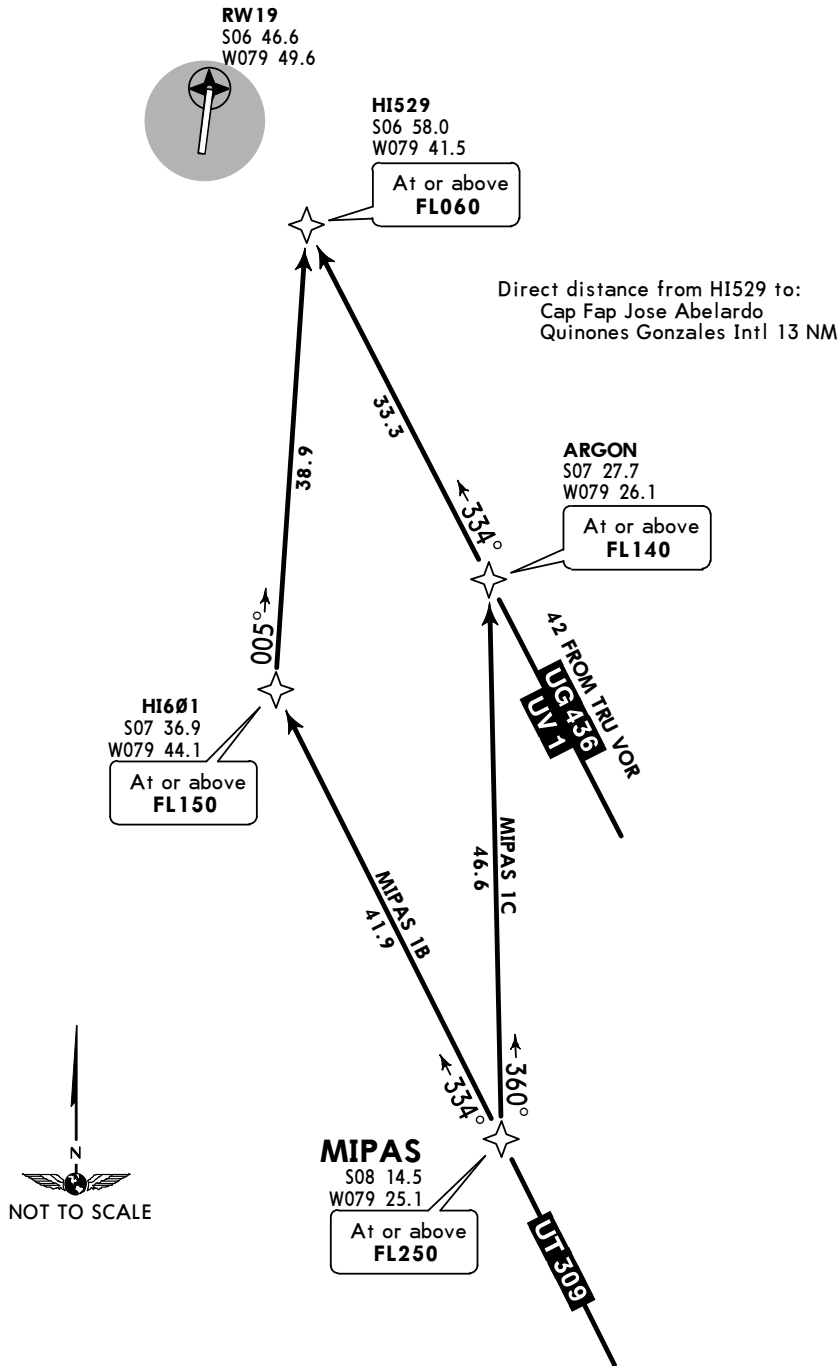
ATIS
 132.5

Apt Elev
 97'

Alt Set: hPa Trans level: By ATC Trans alt: 3000'



MIPAS 1B [MIPA1B], MIPAS 1C [MIPA1C]
 RNAV ARRIVALS

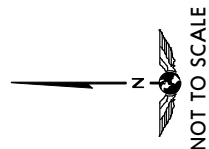


STAR	ROUTING
MIPAS 1B	Descend from route UT-309 to MIPAS, continue to HI601, turn RIGHT to HI529.
MIPAS 1C	Descend from route UT-309 to MIPAS, turn RIGHT to ARGON, turn LEFT to HI529.

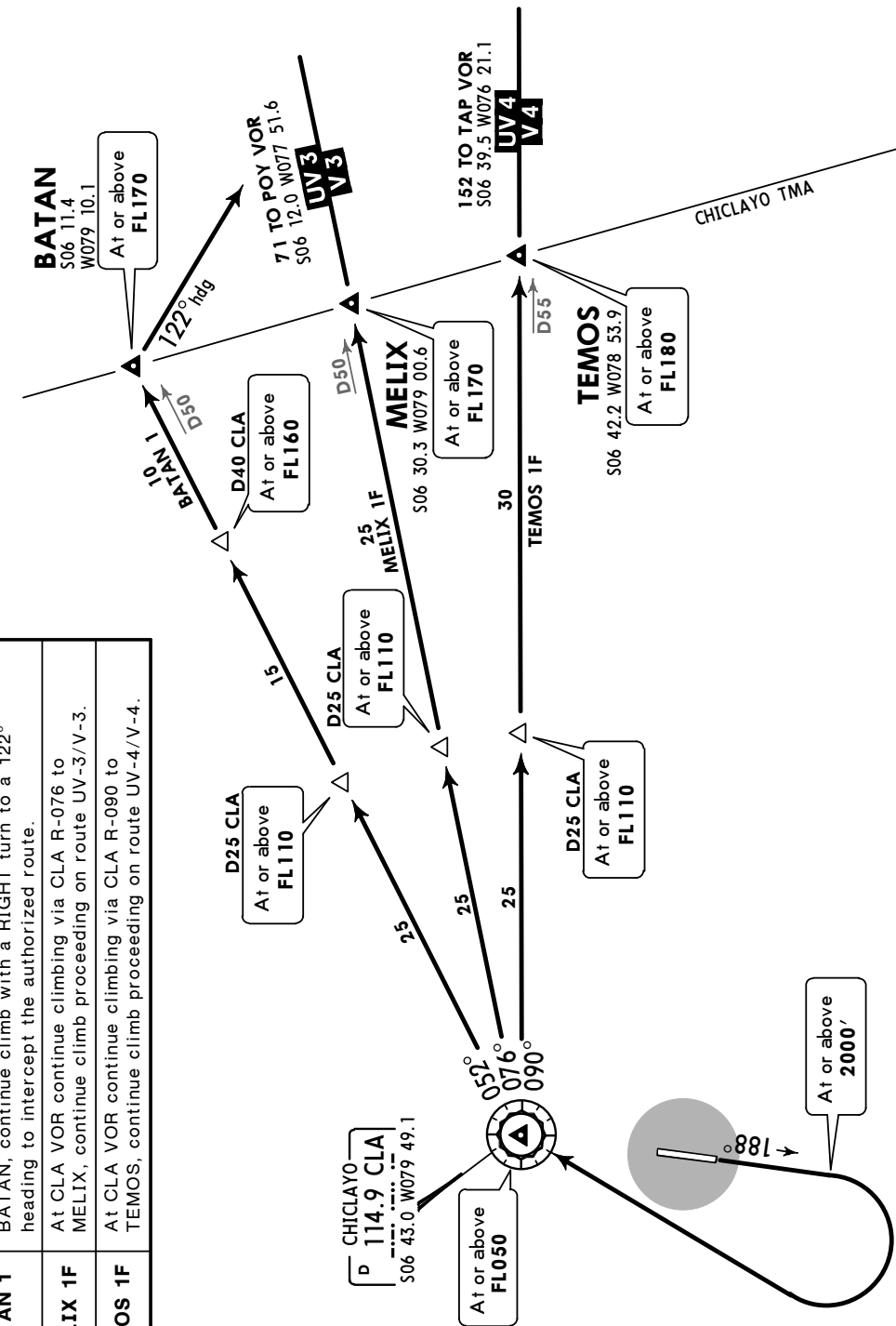
Apt Elev
 97'

Trans level: By ATC Trans alt: 3000'

**BATAN 1 [BATAN1], MELIX 1F [MELI1F]
 TEMOS 1F [TEM01F] DEPARTURES**
 (RWY 19)



Direct distance from Cap Fap Jose
 Abelardo Quinones Gonzales Intl to:
 CLA VOR 4 NM



INITIAL CLIMB	
Climb on runway heading until reaching 2000', turn RIGHT climbing to CLA VOR. Cross CLA VOR at or above FL050.	
ROUTING	
BATAN 1	At CLA VOR continue climbing via CLA R-052 to BATAN, continue climb with a RIGHT turn to a 122° heading to intercept the authorized route.
MELIX 1F	At CLA VOR continue climbing via CLA R-076 to MELIX, continue climb proceeding on route UV-3/V-3.
TEMOS 1F	At CLA VOR continue climbing via CLA R-090 to TEMOS, continue climb proceeding on route UV-4/V-4.

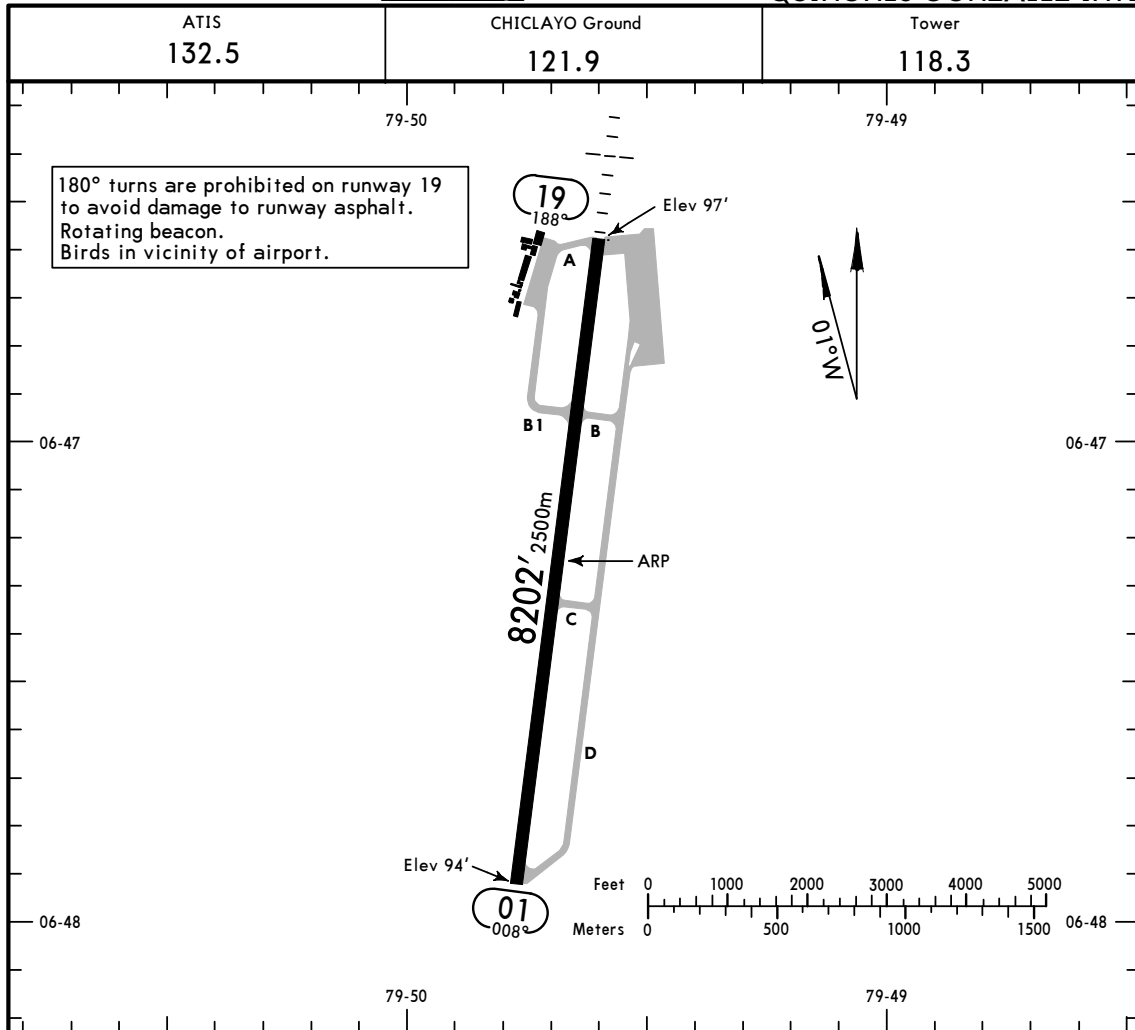
SPHI/CIX

Apt Elev 97'
S06 47.2 W079 49.7

JEPPESEN

14 AUG 15
Eff 20 Aug (10-9)

CHICLAYO, PERU
CAP FAP JOSE ABELARDO
QUINONES GONZALEZ INTL



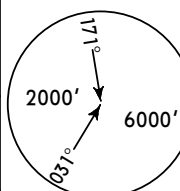
ADDITIONAL RUNWAY INFORMATION

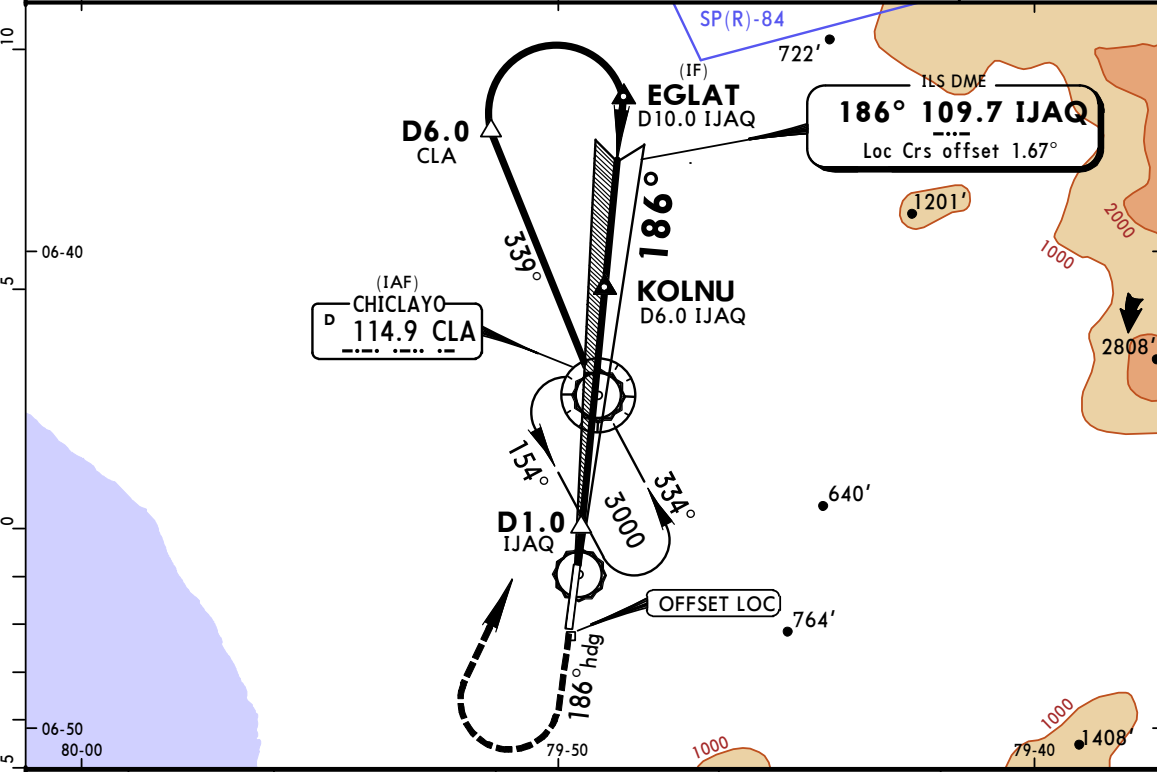
RWY	RL	USABLE LENGTHS		TAKE-OFF	WIDTH
		Threshold	Glide Slope		
01	RL				148' 45m
19	RL	ALS (non-std)	PAPI-L (angle 3.0°)	7088' 2160m	

TAKE-OFF

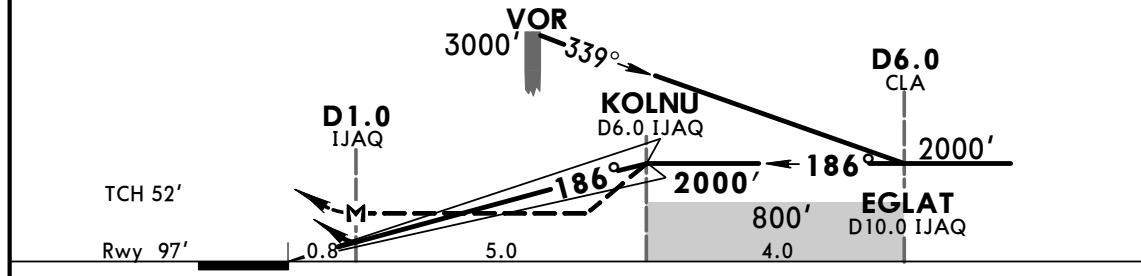
All Rwys

	Take-Off Alternate Apt. Filed	Take-Off Alternate Apt. Not Filed
1 Eng	1600m or Higher Available Landing Minimums	
2 Eng	1 hr alternate (1 Eng Inop) 1600m	Available Landing Minimums
3 or more Eng	2 hr alternate (1 Eng Inop) 800m	

ATIS 132.5		CHICLAYO Approach 118.3		CHICLAYO Tower 118.3		Ground 121.9	
LOC IJAQ 109.7	Final Apch Crs 186°	Minimum Alt KOLNU 2000' (1903')	ILS DA(H) 390' (293')	Apt Elev 97'			
MISSED APCH: Climb on 186° heading to 1000', then turn RIGHT to CLA VOR. Climb to 3000'.							MSA CLA VOR
Alt Set: hPa		Rwy Elev: 4 hPa		Trans level: By ATC		Trans alt: 3000'	



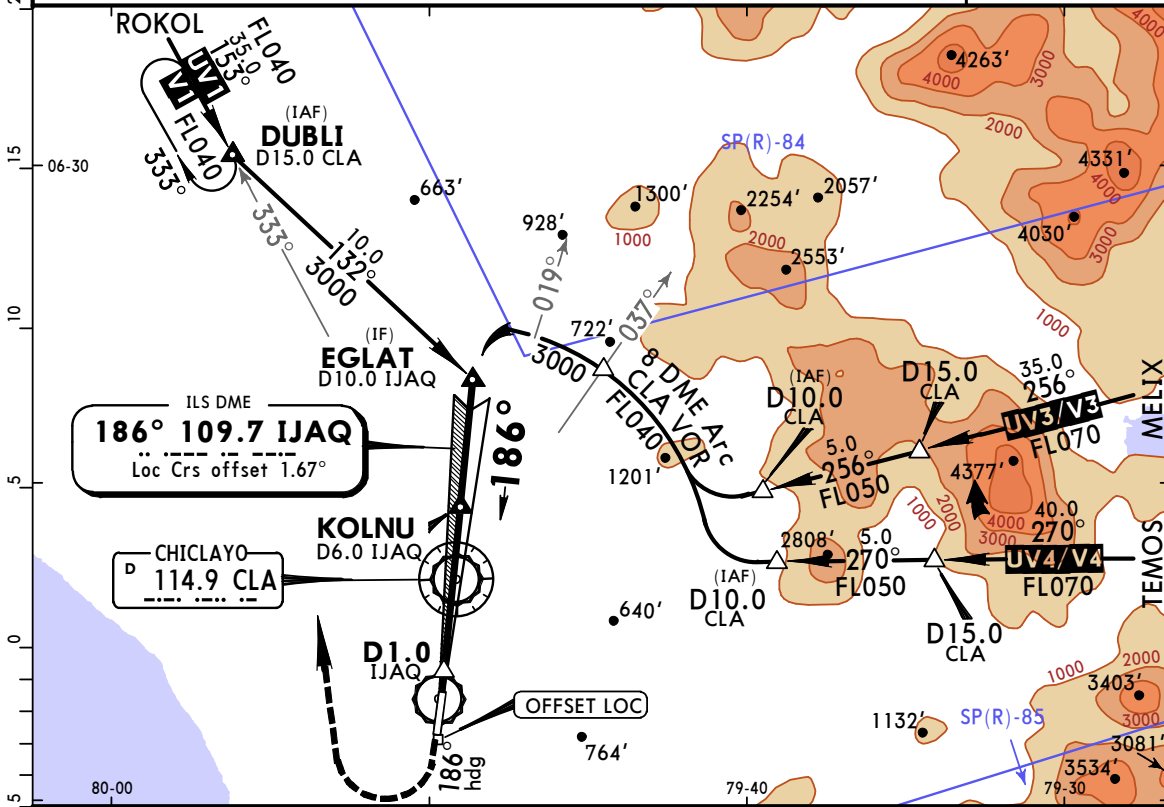
LOC (GS out)	IJAQ DME	2.0	3.0	4.0	5.0
	ALTITUDE	730'	1050'	1370'	1690'



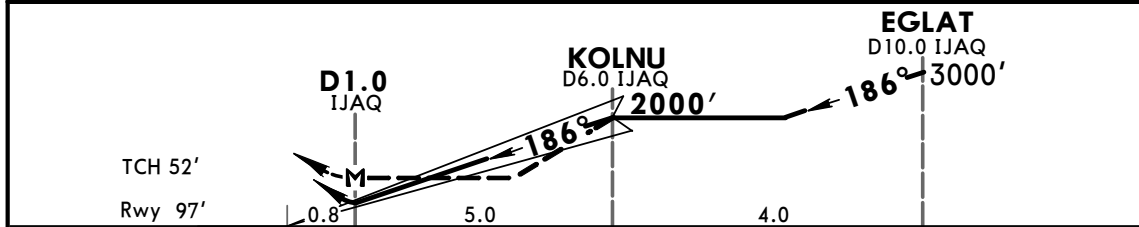
Gnd speed-Kts	70	90	100	120	140	160	ALS PAPI	1000' on	186° hdg	RT	CLA 114.9
GS	3.00°	372	478	531	637	743					
MAP at D1.0 IJAQ											

STRAIGHT-IN LANDING RWY 19						CIRCLE-TO-LAND					
ILS DA(H) 390' (293')			LOC (GS out) MDA(H) 420' (323')			Not Authorized East of Airport					
FULL		ALS out		ALS out		Max Kts MDA(H)					
A						800' (703') - 3.0 km					
B						135					
C	1000m	1200m	1200m	1600m		180					
D						205					
						900' (803') - 5.0 km					

ATIS 132.5		CHICLAYO Approach 118.3		CHICLAYO Tower 118.3		Ground 121.9
LOC IJAQ 109.7	Final Apch Crs 186°	Minimum Alt KOLNU 2000' (1903')	ILS DA(H) 390' (293')	Apt Elev 97' Rwy 97'		
MISSED APCH: Climb on 186° heading to 1000', then turn RIGHT to DUBLI. Climb to FL040.						
Alt Set: hPa		Rwy Elev: 4 hPa		Trans level: By ATC		Trans alt: 3000'
1. DME required.						MSA CLA VOR



LOC (GS out)	IJAQ DME	2.0	3.0	4.0	5.0
	ALTITUDE	730'	1050'	1370'	1690'



Gnd speed-Kts	70	90	100	120	140	160	ALS PAPI	1000' on 186° hdg	RT	DUBLI
GS	3.00°	372	478	531	637	743				
MAP at D1.0 IJAQ										

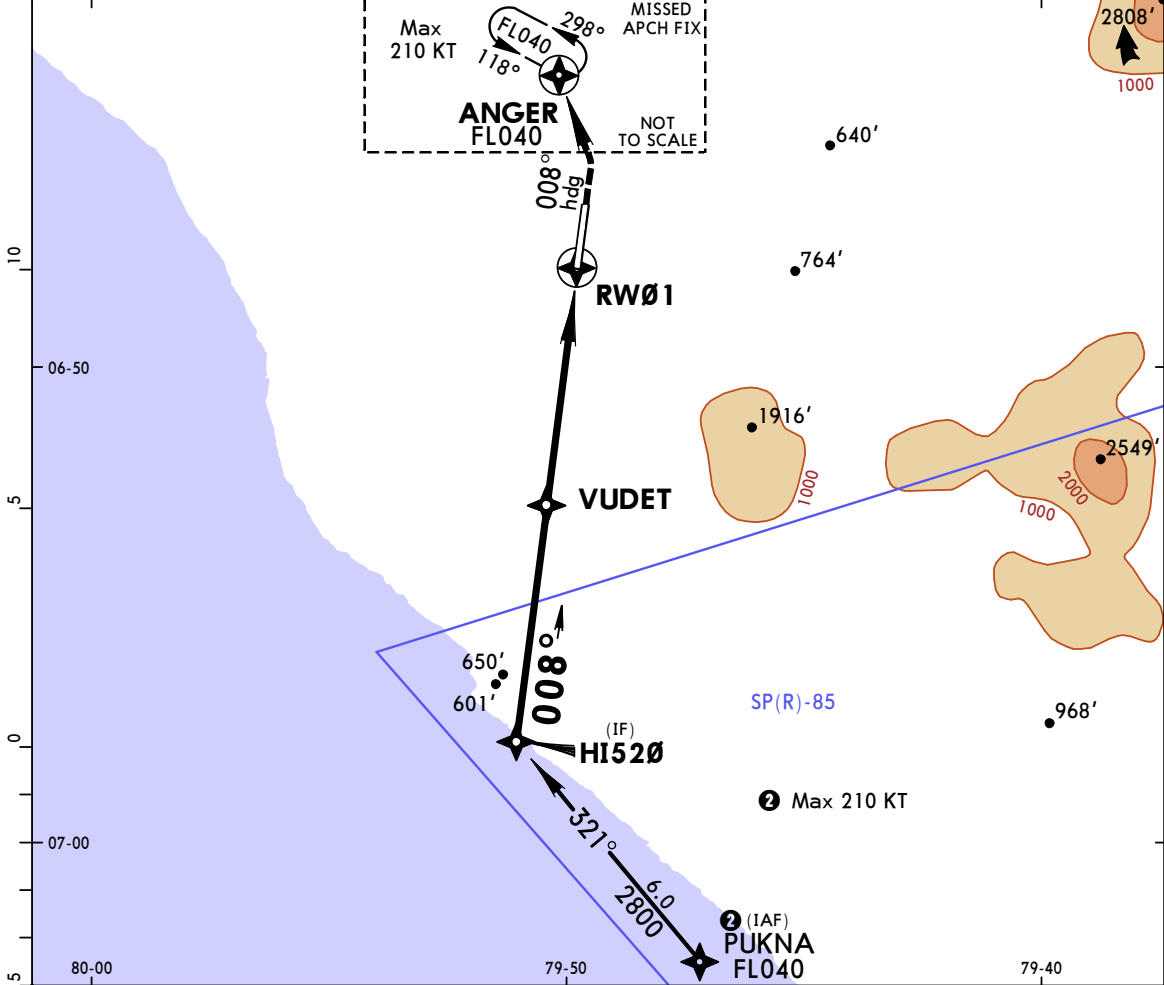
STRAIGHT-IN LANDING RWY 19				CIRCLE-TO-LAND	
ILS DA(H) 390' (293')		LOC (GS out) MDA(H) 420' (323')		Not Authorized East of Airport	
FULL		ALS out		Max Kts	
A				100	800' (703') - 3.0 km
B				135	
C	1000m	1200m	1200m	180	900' (803') - 5.0 km
D				205	

PANS OPS

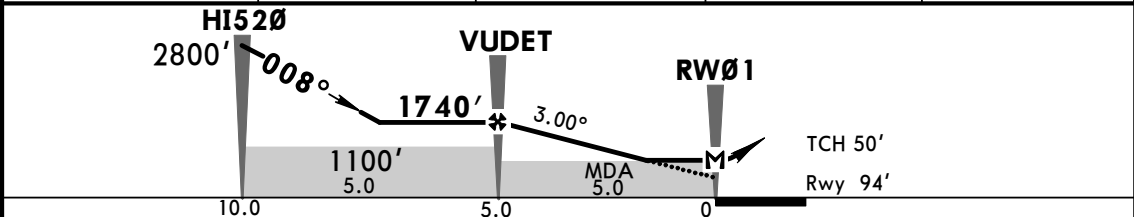
ATIS 132.5		CHICLAYO Approach 118.3		CHICLAYO Tower 118.3		Ground 121.9	
RNP	Final Apch Crs 008°	Minimum Alt 1740' (1646')	LNNAV MDA(H) 590' (496')	Apt Elev 97'	Rwy 94'		

MISSED APCH: Climb to 1000' heading 008°, turn LEFT climbing to FL040 direct to ANGER.

Alt Set: hPa Apt Elev: 4 hPa Trans level: By ATC Trans alt: 3000'



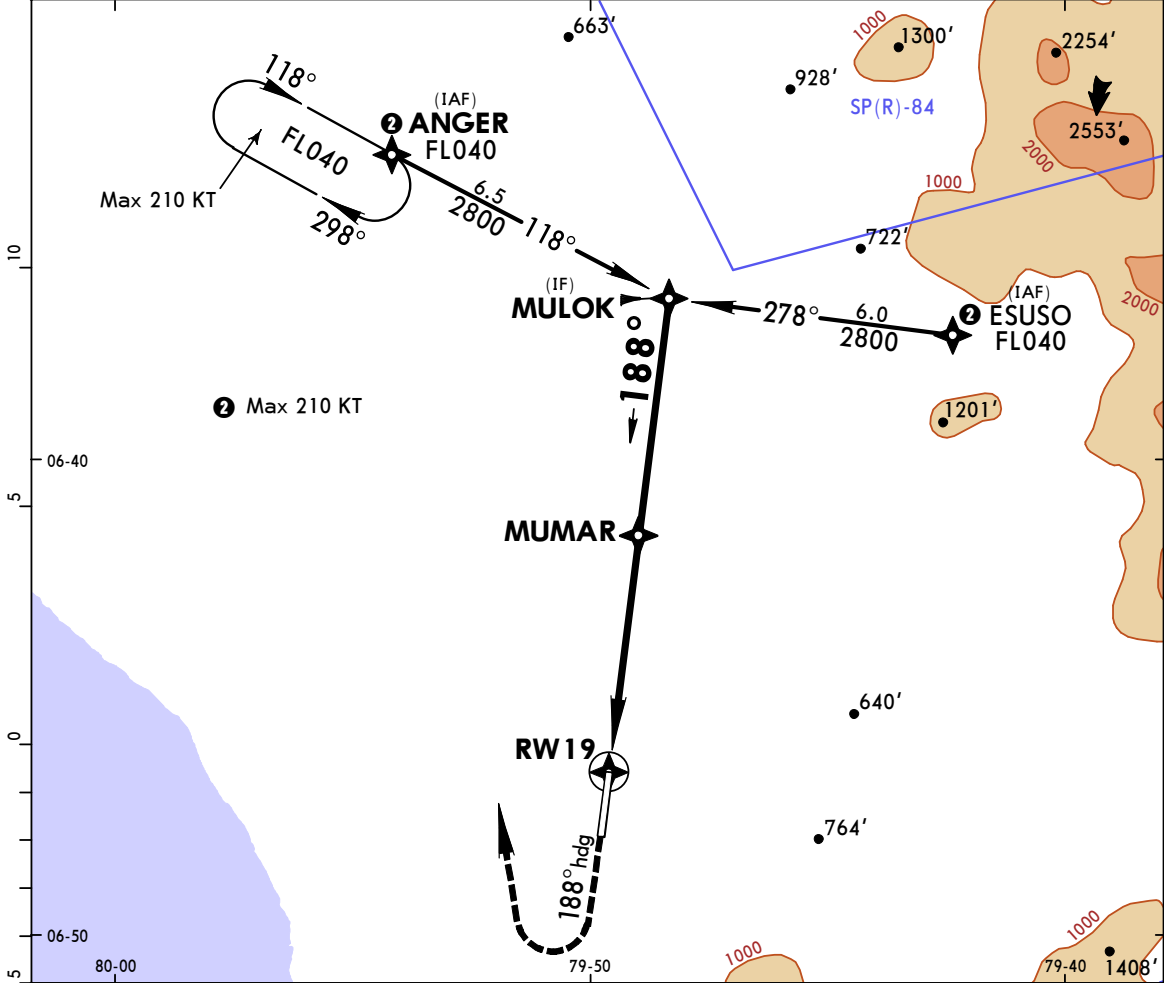
NM TO RW01	VUDET	4.0	3.0	2.0
ALTITUDE	1740'	1420'	1100'	780'



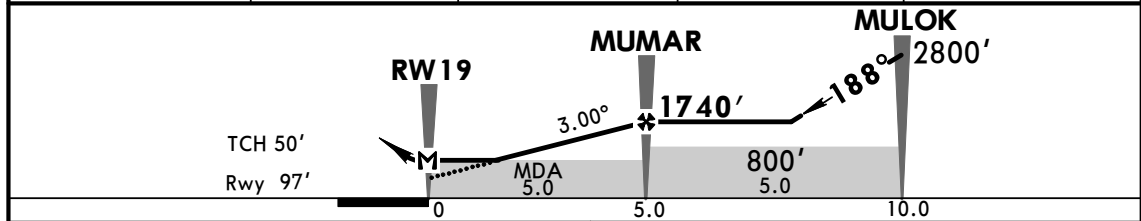
Gnd speed-Kts	70	90	100	120	140	160	1000' ↑ on ↓ 008° FL040 ANGER LT
Descent angle 3.00°	372	478	531	637	743	849	
MAP at RW01							

STRAIGHT-IN LANDING RWY 01 LNNAV MDA(H) 590' (496')		CIRCLE-TO-LAND Not Authorized East of Airport	
A		Max Kts	MDA(H)
B	1.6 km	100	800' (703') -3.0 km
C	2.0 km	135	
D	2.4 km	180	900' (803') -5.0 km
		205	

ATIS 132.5		CHICLAYO Approach 118.3		CHICLAYO Tower 118.3		Ground 121.9	
RNP	Final Apch Crs 188°	Minimum Alt MUMAR 1740' (1643')	LNAV MDA(H) 540' (443')	Apt Elev 97'	Rwy 97'		
MISSED APCH: Climb to 1000' heading 188°, turn RIGHT climbing to 4000' direct to ANGER.							
Alt Set: hPa		Apt Elev: 4 hPa		Trans level: By ATC		Trans alt: 3000'	



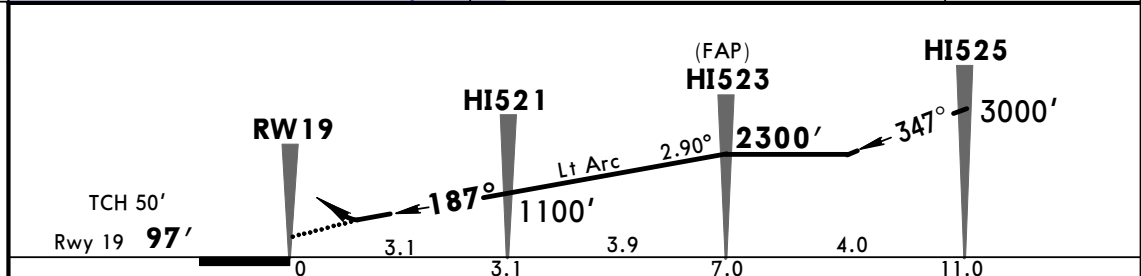
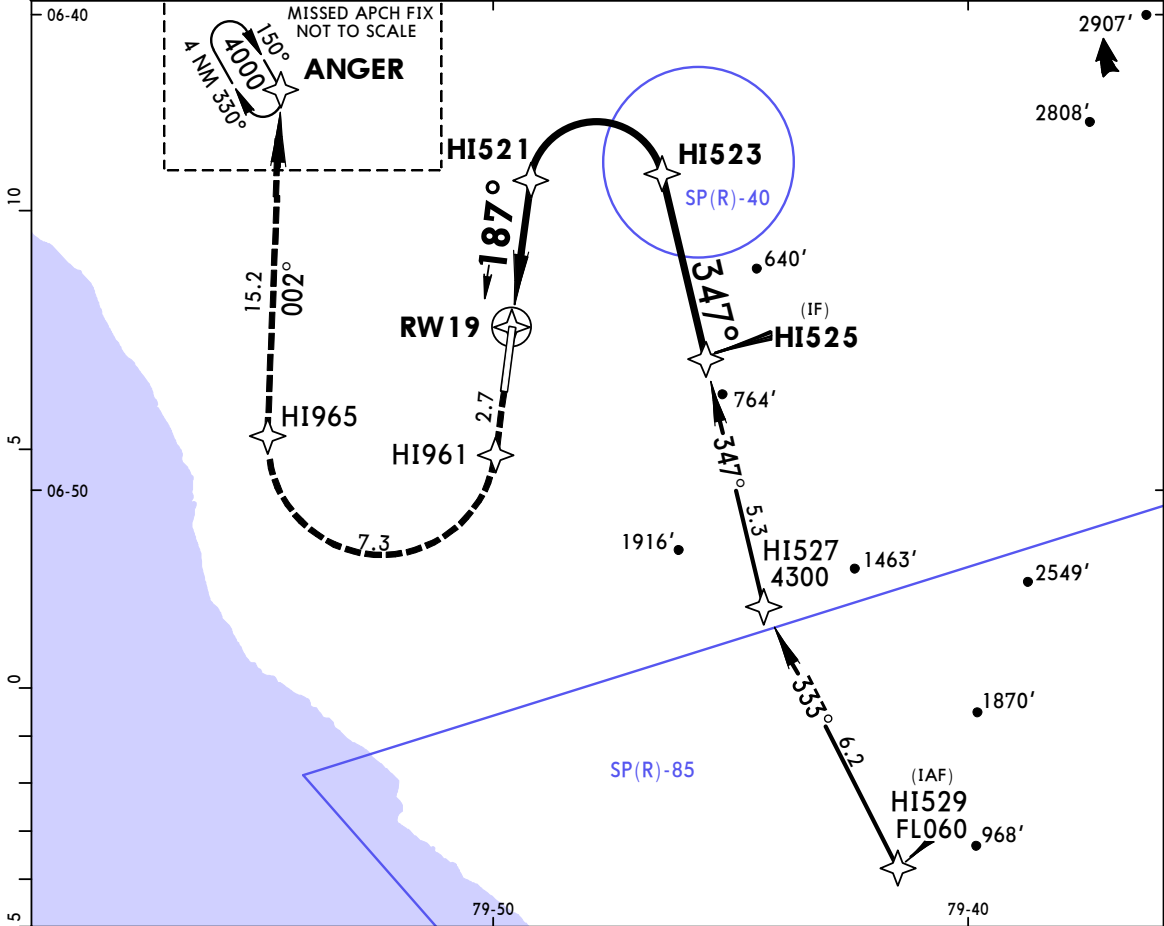
NM TO RW19	2.0	3.0	4.0	MUMAR
ALTITUDE	780'	1100'	1420'	1740'



Gnd speed-Kts	70	90	100	120	140	160	ALS 1000'	188° hdg	4000'	ANGER
Descent angle	3.00°	372	478	531	637	743				
MAP at RW19										

STRAIGHT-IN LANDING RWY 19					CIRCLE-TO-LAND Not Authorized East of Airport				
LNAV MDA(H) 540' (443')					MDA(H)				
ALS out					Max Kts				
A	1.6 km				100				
B	2.0 km				135				
C	2.4 km				180				
D					205				
					800' (703') -3.0 km				
					900' (803') -5.0 km				

ATIS 132.5		CHICLAYO Approach 118.3		CHICLAYO Tower 118.3		Ground 121.9	
RNAV	Final Apch Crs 187°	Minimum Alt HI523 2300' (2203')	RNP 0.30 DA(H) 400' (303')	Apt Elev 97'	Rwy 19 97'		
MISSED APCH: Climb to 4000' via the missed approach RNP track to ANGER and join hold. Follow instructions from ATC.						6000'	
Alt Set: hPa		Rwy Elev: 4 hPa		Trans level: By ATC		Trans alt: 3000'	
1. SPECIAL AIRCRAFT & AIRCREW AUTHORIZATION REQUIRED. 2. RF required. 3. For uncompensated Baro-VNAV systems, procedure not authorized below 5°C (41°F) or above 54°C (129°F).							
						MSA RW19	



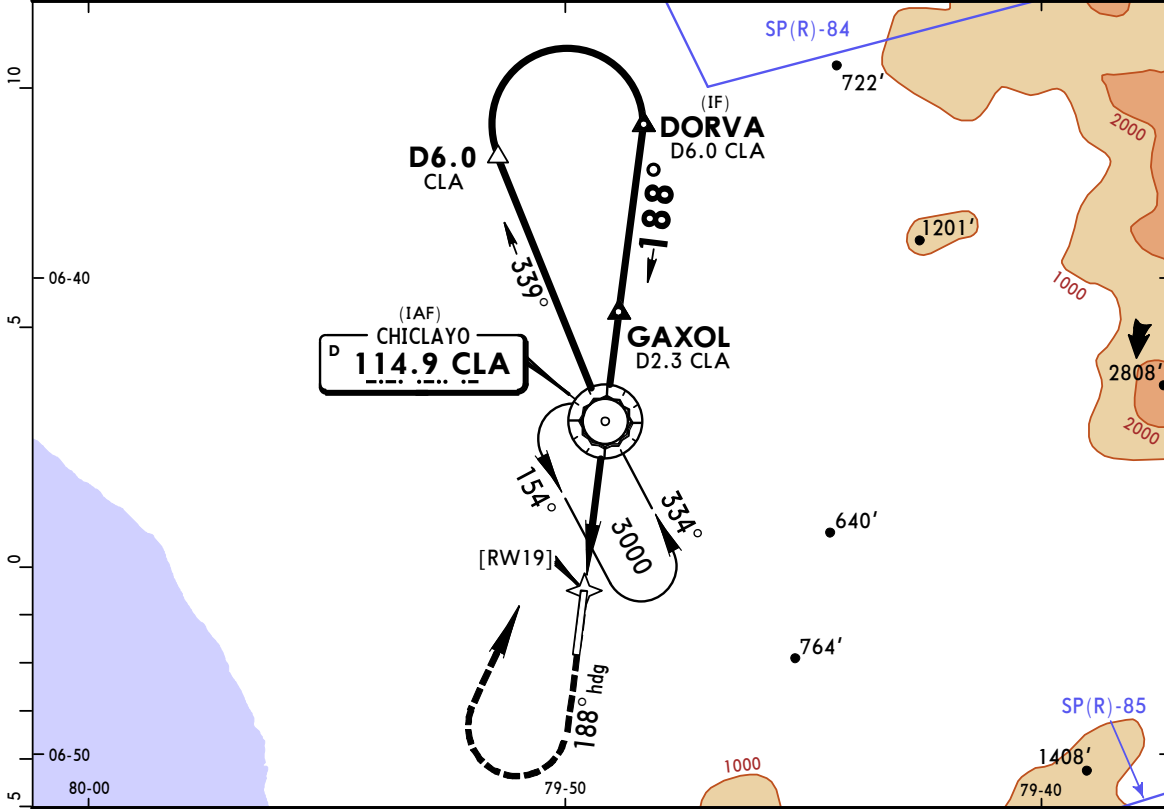
Gnd speed-Kts	70	90	100	120	140	160	ALS	4000'	RNP track	ANGER
Descent Angle	2.90°	359	462	513	616	718	821	PAPI		
MAP at DA										

1 STRAIGHT-IN LANDING RWY 19
 RNP 0.30
 DA(H) 400' (303')
 ALS out

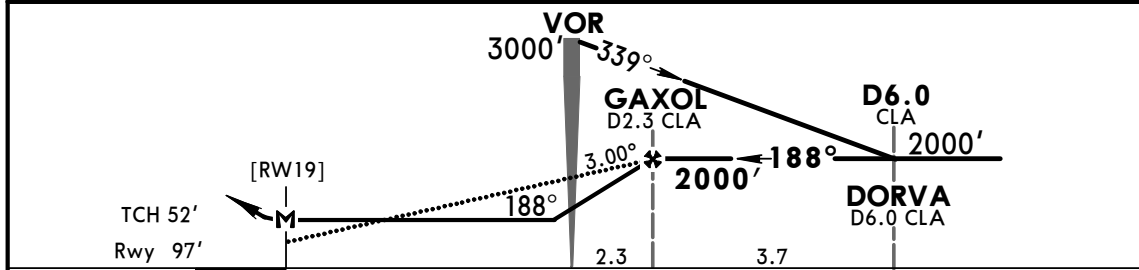
A	NOT APPLICABLE
B	NOT APPLICABLE
C	1200m
D	NOT APPLICABLE

1 Circling not authorized.

ATIS 132.5		CHICLAYO Approach 118.3		CHICLAYO Tower 118.3		Ground 121.9	
VOR CLA 114.9	Final Apch Crs 188°	Minimum Alt GAXOL 2000' (1903')	MDA(H) 570' (473')	Apt Elev 97' Rwy 97'			
MISSED APCH: Climb on 188° heading to 1000', then turn RIGHT to CLA VOR. Climb to 3000'.							
Alt Set: hPa		Rwy Elev: 4 hPa		Trans level: By ATC		Trans alt: 3000'	
1. DME required.						MSA CLA VOR	



CLA DME	CLA VOR	1.0	2.0	GAXOL
ALTITUDE	1280'	1600'	1920'	2000'



Gnd speed-Kts	70	90	100	120	140	160	ALS PAPI	1000' ↑ on	188° hdg	RT	CLA 114.9
Descent Angle 3.00°	372	478	531	637	743	849					
GAXOL to MAP	5.9	5:03	3:56	3:32	2:57	2:32	2:13				

STRAIGHT-IN LANDING RWY 19 MDA(H) 570' (473')				CIRCLE-TO-LAND Not Authorized East of Airport			
ALS out				Max Kts			
A	1.6 km			100	800'(703') -3.0 km		
B				135			
C	2.8 km			180	900'(803') -5.0 km		
D				205			

PANS OPS