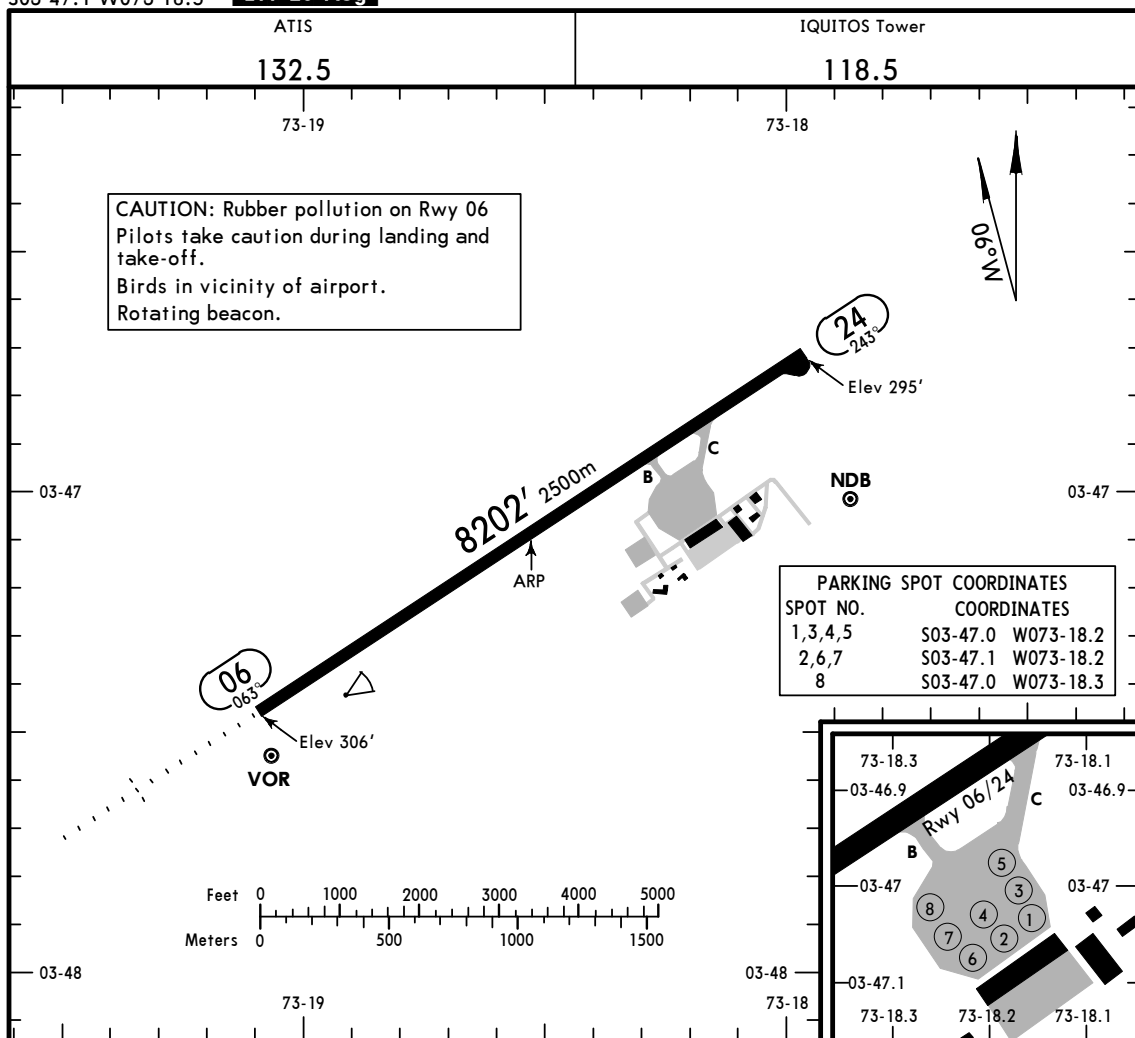


SPQT/IQT
 Apt Elev 306'
 S03 47.1 W073 18.5

JEPPESEN
 14 AUG 15
 Eff 20 Aug 10-9

IQUITOS, PERU
 CORONEL FRANCISCO SECADA VIGNETTA INTL



ADDITIONAL RUNWAY INFORMATION

RWY		USABLE LENGTHS			WIDTH
		LANDING BEYOND		TAKE-OFF	
		Threshold	Glide Slope		
06	RL HIALS SFL PAPI-L (angle 3.00°)	RVR	7218' 2200m		148'
24	RL PAPI-L (angle 3.00°)				45m

TAKE-OFF

All Rwys	
Take-Off Alternate Apt. Filed	Take-Off Alternate Apt. Not Filed
1 Eng	1600m or Higher Available Landing Minimums
2 Eng	Available Landing Minimums
3 or more Eng	

SPQT/IQT
CORONEL FRANCISCO
SECADA VIGNETTA INTL

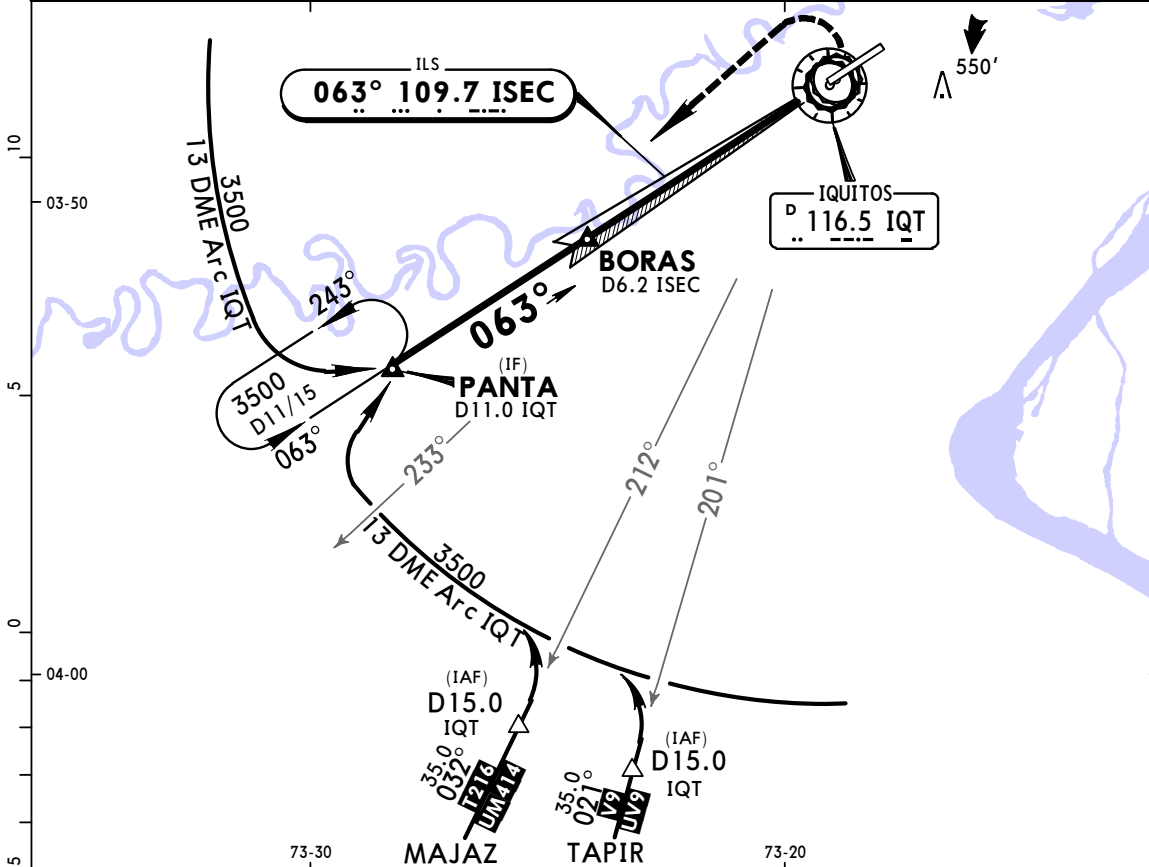
JEPPESEN
14 AUG 15 (11-1) Eff 20 Aug

IQUITOS, PERU

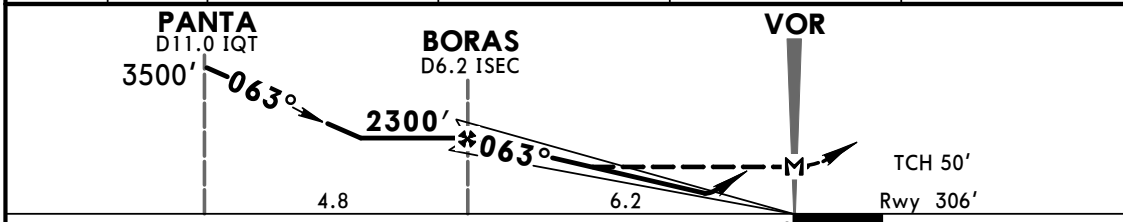
ILS Rwy 06

BRIEFING STRIP™

ATIS 132.5		IQUITOS Approach 124.1		IQUITOS Tower 118.5	
LOC ISEC 109.7	Final Apch Crs 063°	Minimum Alt BORAS 2300' (1994')	ILS DA(H) 570' (264')	Apt Elev 306' Rwy 306'	3000'
MISSED APCH: Climbing LEFT turn to PANTA.					
Alt Set: hPa		Rwy Elev: 11 hPa	Trans level: By ATC	Trans alt: 4000'	MSA IQT VOR



LOC (GS out)	ISEC DME	5.0	4.0	3.0	2.0
	ALTITUDE	1910'	1590'	1270'	950'



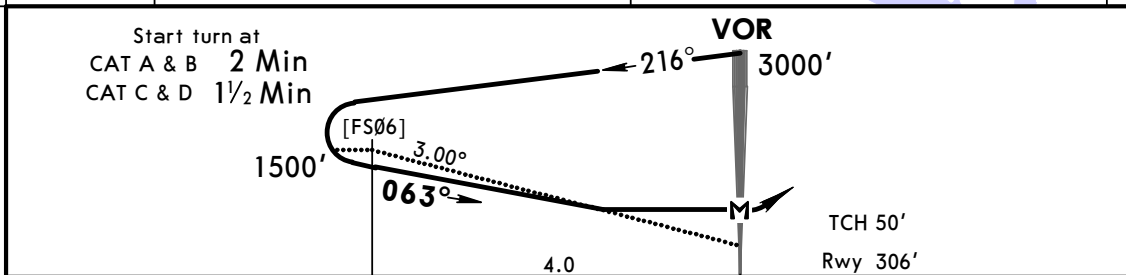
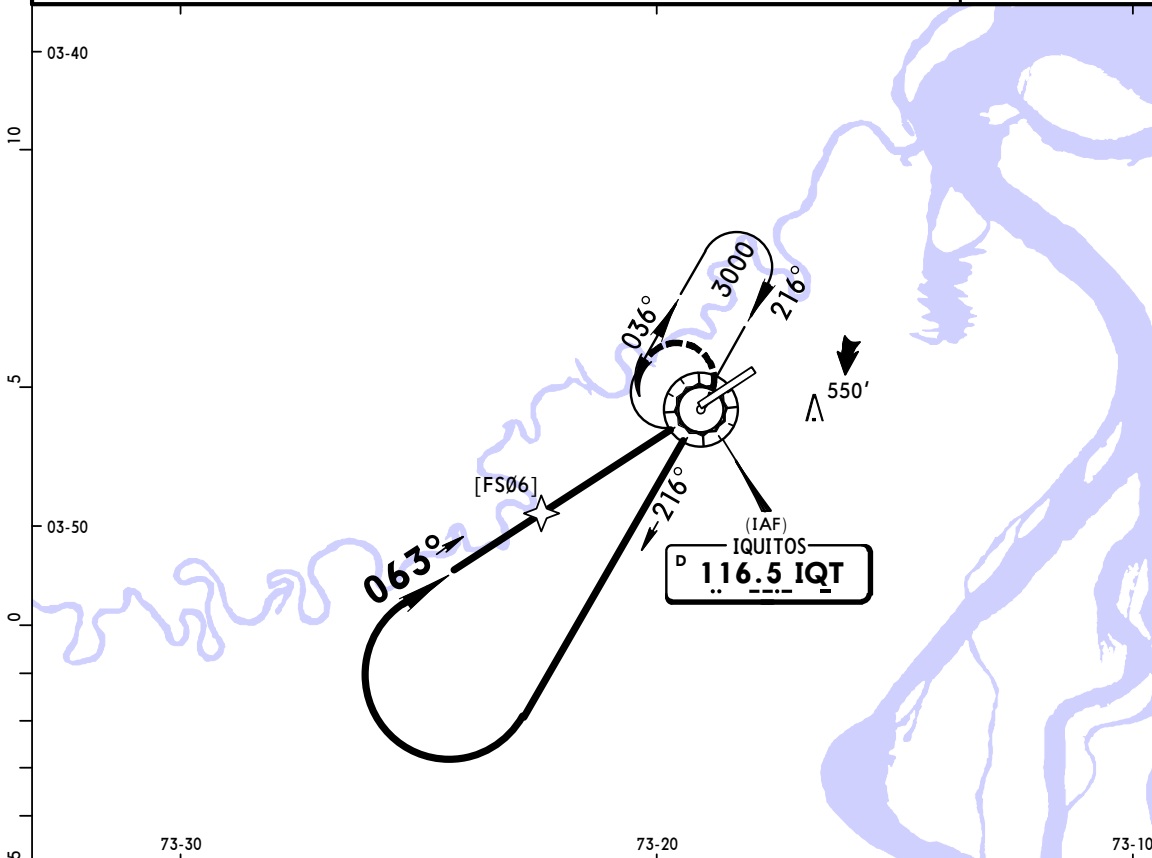
Gnd speed-Kts	70	90	100	120	140	160	ALS PAPI LT PANTA	
GS	3.00°	372	478	531	637	743		849
MAP at VOR or BORAS to MAP	6.2	5:19	4:08	3:43	3:06	2:39		2:20

STRAIGHT-IN LANDING RWY 06				CIRCLE-TO-LAND	
ILS DA(H) 570' (264')		LOC (GS out) MDA(H) 660' (354')		Max Kts	
FULL	ALS out	ALS out	ALS out	100	850'(544') -3.0 km
				135	
800m	1200m	1600m	1600m	180	1100'(794') -5.0 km
			2000m	205	

PANS OPS

SPQT/IQT
CORONEL FRANCISCO
SECADA VIGNETTA INTL

ATIS 132.5		IQUITOS Approach 124.1		IQUITOS Tower 118.5	
VOR IQT 116.5	Final Apch Crs 063°	No FAF	MDA(H) 800' (494')	Apt Elev 306' Rwy 306'	3000'
MISSED APCH: Turn LEFT to IQT VOR climbing to 3000'.					
Alt Set: hPa Rwy Elev: 11 hPa Trans level: By ATC 1. Max IAS 230 kts for holding, 185 kts for base leg.				Trans alt: 4000'	

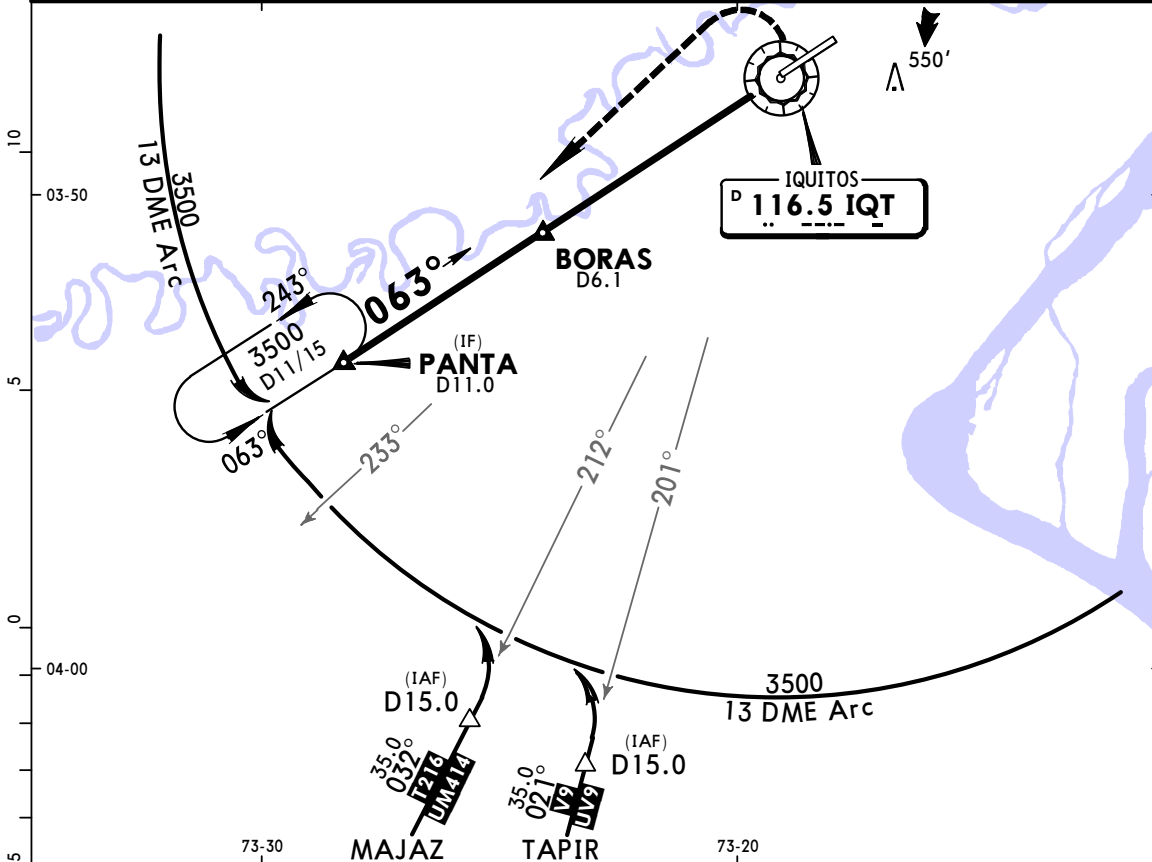


Gnd speed-Kts	70	90	100	120	140	160	ALS 3000'	IQT 116.5
Descent Angle 3.00°	372	478	531	637	743	849		
MAP at VOR							PAPI	LT

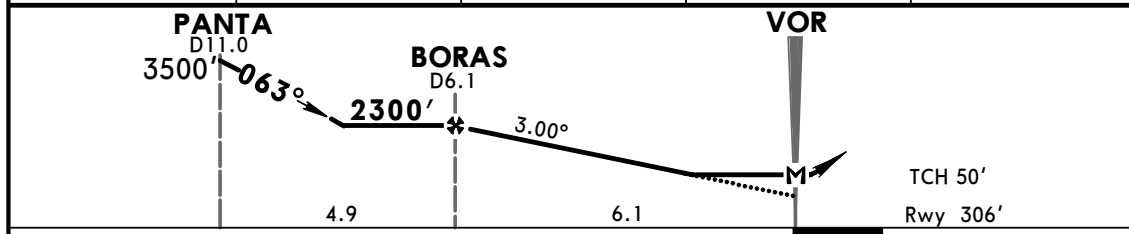
	STRAIGHT-IN LANDING RWY06			CIRCLE-TO-LAND	
	MDA(H)	ALS out	Max Kts	MDA(H)	
A			100		
B	1.6 km		135	850'(544')	-3.0 km
C	2.8 km		180		
D			205	1100'(794')	-5.0 km

SPQT/IQT
CORONEL FRANCISCO
SECADA VIGNETTA INTL

BRIEFING STRIP™	ATIS 132.5		IQUITOS Approach 124.1		IQUITOS Tower 118.5	
	VOR IQT 116.5	Final Apch Crs 063°	Minimum Alt BORAS 2300' (1994')	MDA(H) 800' (494')	Apt Elev 306' Rwy 306'	3000' MSA IQT VOR
	MISSED APCH: Climbing LEFT turn to PANTA.					
Alt Set: hPa		Rwy Elev: 11 hPa	Trans level: By ATC		Trans alt: 4000'	
1. DME Required						



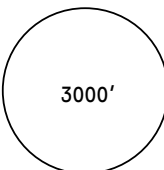
IQT DME	5.0	4.0	3.0	2.0
ALTITUDE	1960'	1640'	1320'	1000'

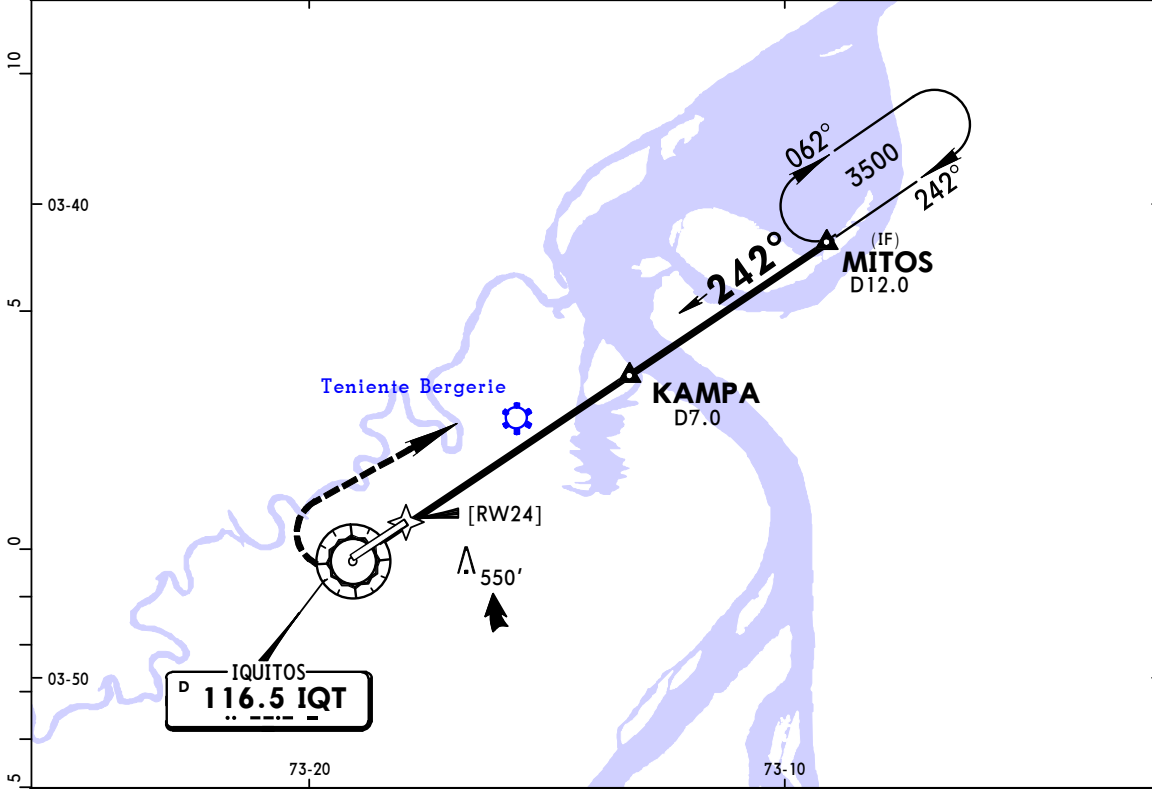


Gnd speed-Kts	70	90	100	120	140	160	ALS PAPI LT PANTA
Descent Angle	3.00°	372	478	531	637	743	
MAP at VOR							

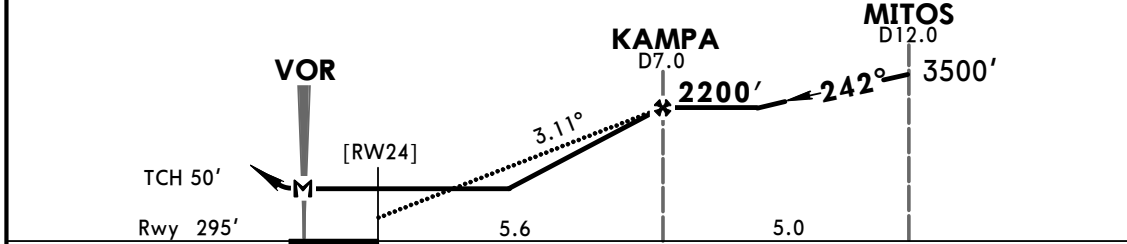
STRAIGHT-IN LANDING RWY 06			CIRCLE-TO-LAND		
MDA(H) 800' (494')			MDA(H)		
ALS out			Max Kts		
A			100	850' (544') -3.0 km	
B	1600m		135		
C			180	1100' (794') -5.0 km	
D	2800m		205		


PANS OPS

BRIEFING STRIP™	ATIS 132.5		IQUITOS Approach 124.1		IQUITOS Tower 118.5	
	VOR IQT 116.5	Final Apch Crs 242°	Minimum Alt KAMPA 2200' (1905')	MDA(H) 800' (505')	Apt Elev 306' Rwy 295'	 3000' MSA IQT VOR
	MISSED APCH: Climbing RIGHT turn to MITOS.					
Alt Set hPa		Rwy Elev: 11 hPa	Trans level: By ATC		Trans alt: 4000'	
1. DME Required.						



IQT DME	3.0	4.0	5.0	6.0
ALTITUDE	880'	1200'	1520'	1840'



Gnd speed-Kts	70	90	100	120	140	160	PAPI-L		MITOS
Descent Angle	3.11°	385	495	550	660	770			
MAP at VOR									

STRAIGHT-IN LANDING RWY24			CIRCLE-TO-LAND		
MDA(H) 800' (505')			MDA(H) _____		
A	1.6 km		Max Kts 100	850'(544') -3.0 km	
B			135		
C	2.8 km		180	1100'(794') -5.0 km	
D			205		

PANS OPS