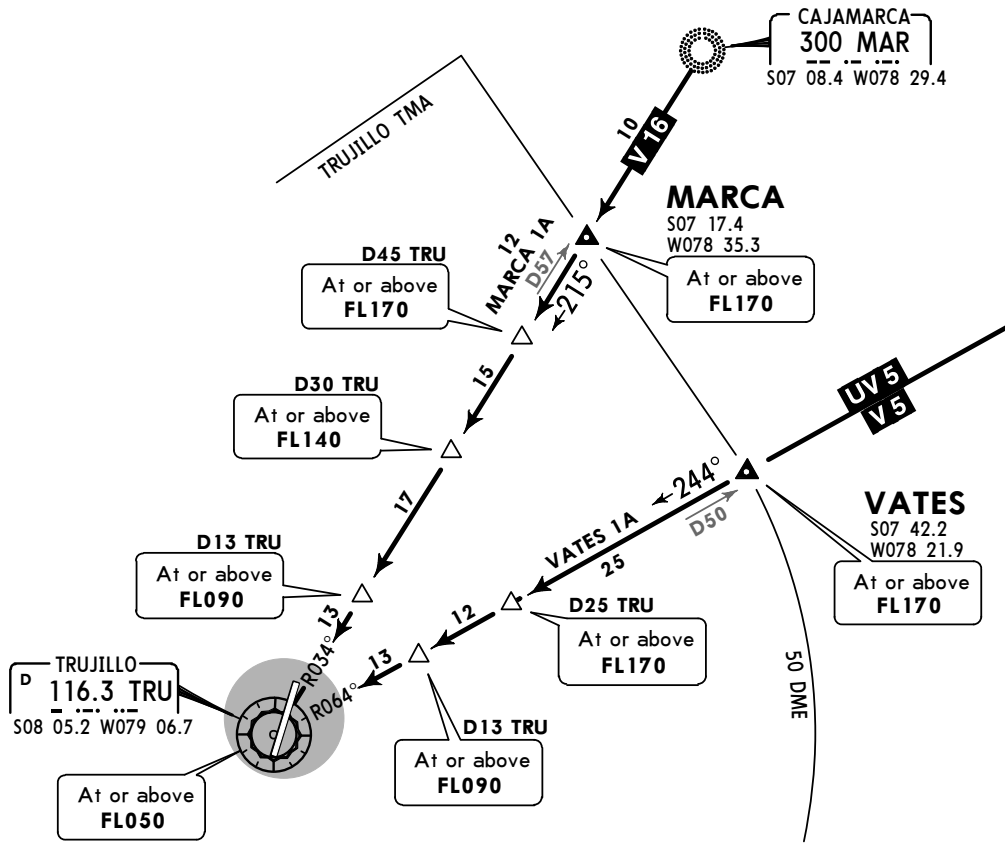


Apt Elev 128' Alt set: hPa Trans level: By ATC Trans alt: 4500'

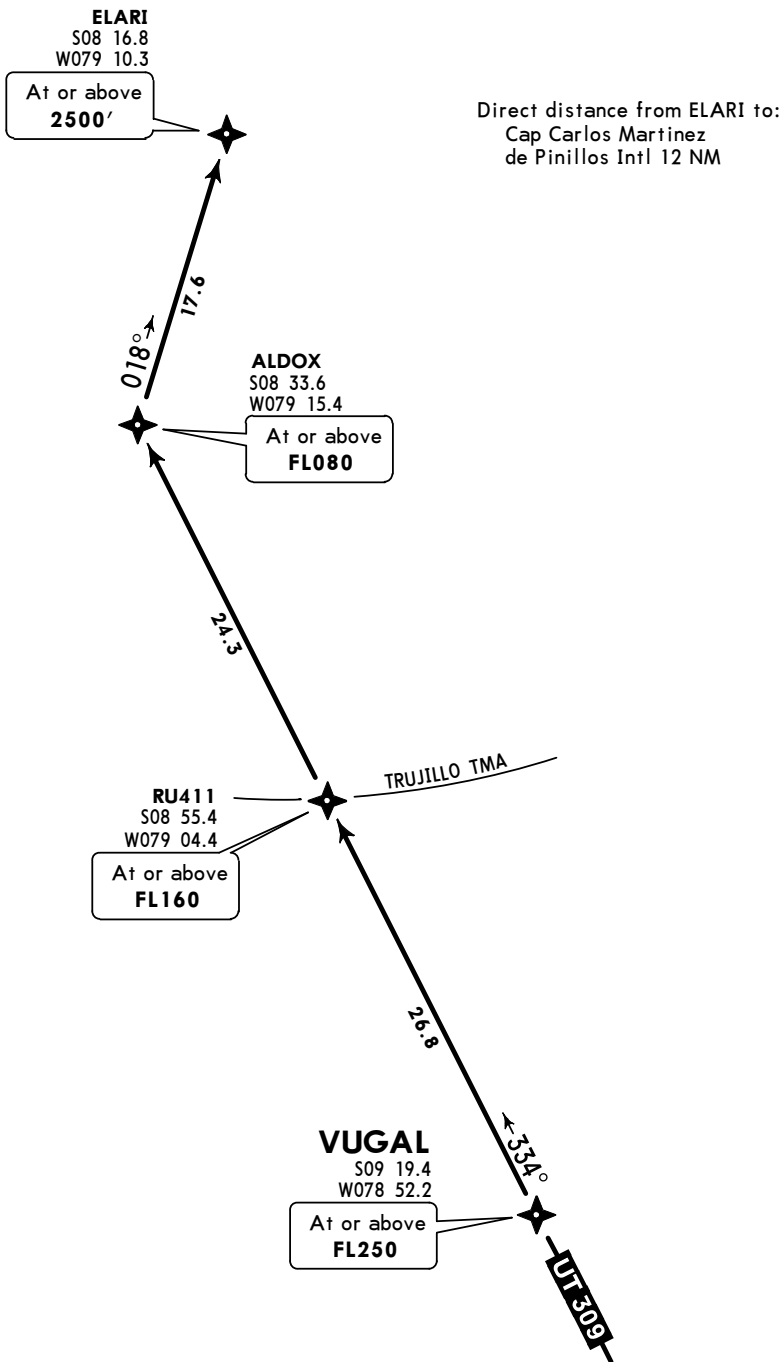
**MARCA 1A [MARC1A],
VATES 1A [VATE1A]
ARRIVALS
(RWY 20)**



STAR	ROUTING
MARCA 1A	Descend from MAR NDB and proceed in accordance with authorization from ATC.
VATES 1A	Descend on route UV/V-5 and proceed in accordance with authorization from ATC.

Apt Elev 128' Alt set: hPa Trans level: By ATC Trans alt: 4500'
1. GNSS required.
2. RNP 1 approval required.

VUGAL 1 RNAV (GNSS) ARRIVAL
[VUGAL1]
(RWY 02)



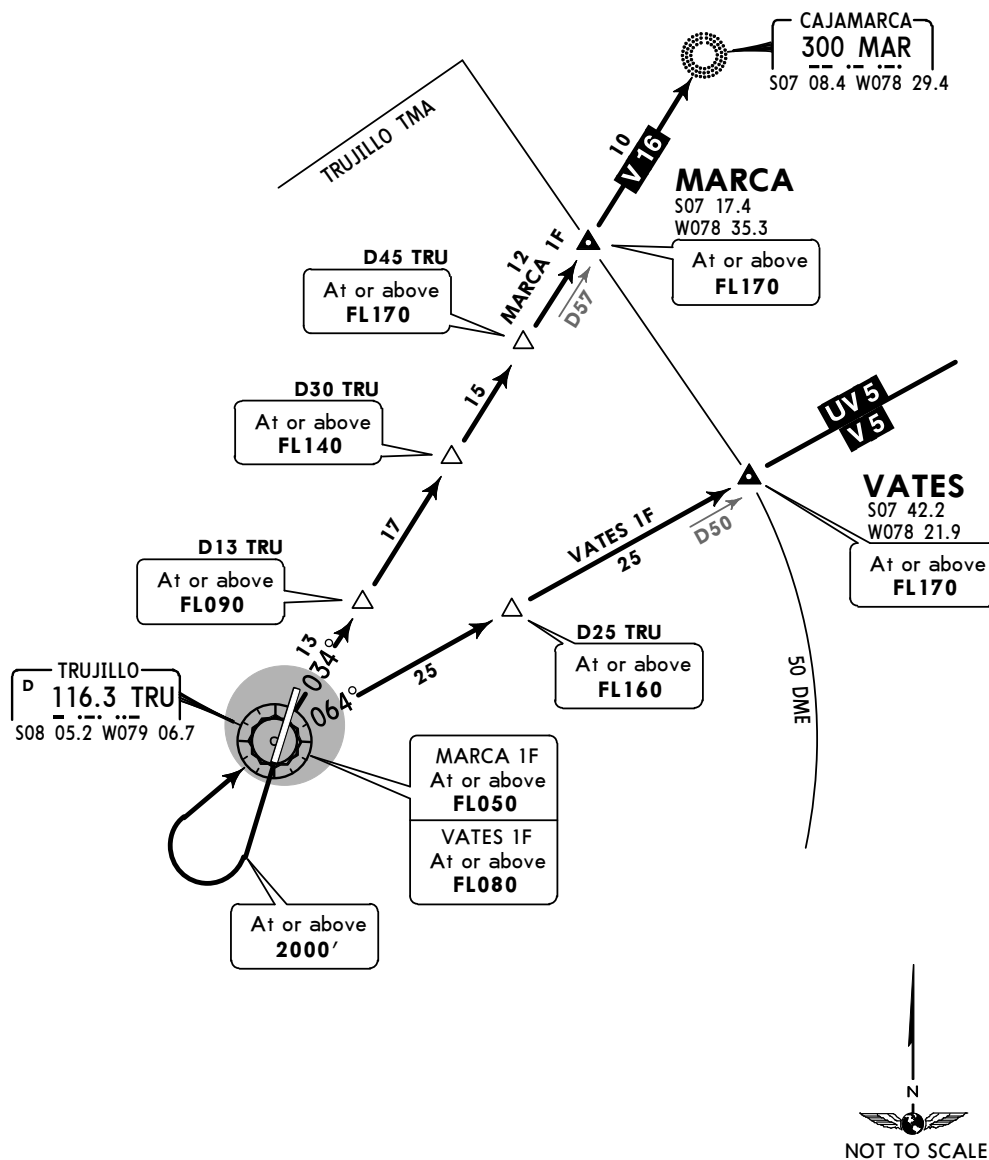
ROUTING

Descend on route UT-309 to VUGAL, then continue via ALDOX to ELARI according to ATC instructions.

Apt Elev
128'

Trans level: By ATC Trans alt: 4500'

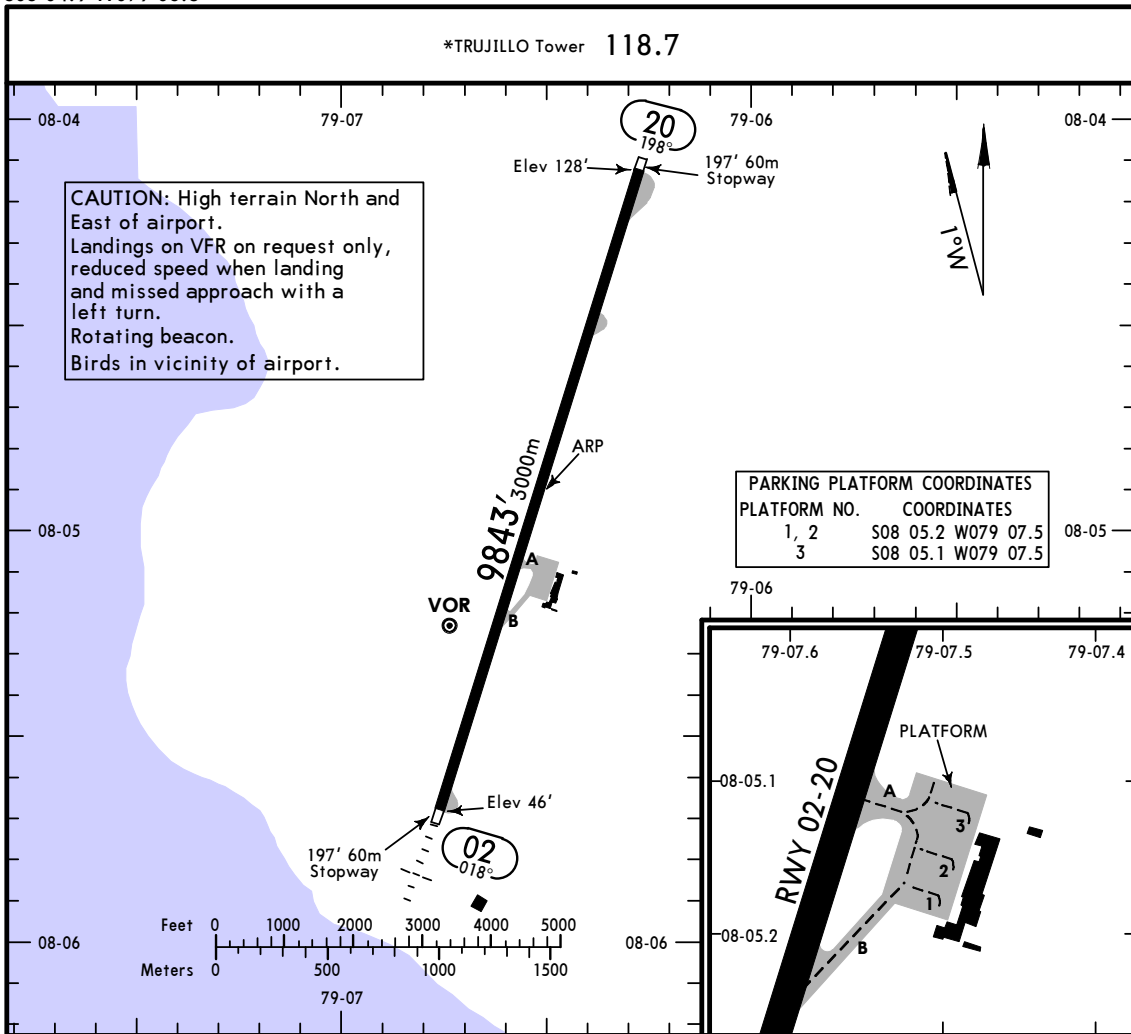
MARCA 1F [MARC1F],
VATES 1F [VATE1F]
DEPARTURES
(RWY 20)



INITIAL CLIMB

Climb on runway heading until reaching 2000', then turn RIGHT climbing to TRU VOR.

SID	ROUTING
MARCA 1F	At TRU VOR, continue climbing via TRU R-034 to MARCA, then continue climb to MAR NDB.
VATES 1F	At TRU VOR, continue climbing via TRU R-064 to VATES, then continue climb on route UV/V-5.



ADDITIONAL RUNWAY INFORMATION

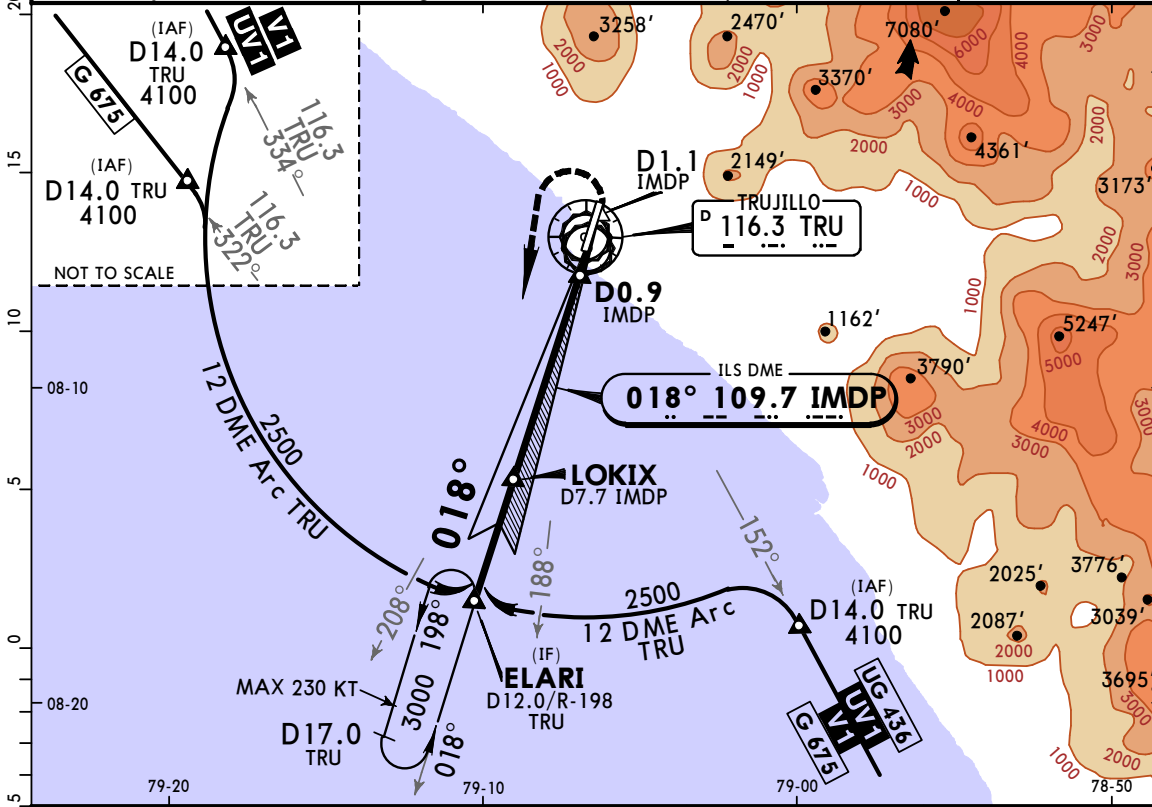
RWY		USABLE LENGTHS			WIDTH
		Threshold	Landing Beyond Glide Slope	Take-Off	
02	RL ALS PAPI-L (angle 3.0°)		8906' 2715m		148'
20	RL PAPI-L (angle 3.0°)				45m

TAKE-OFF

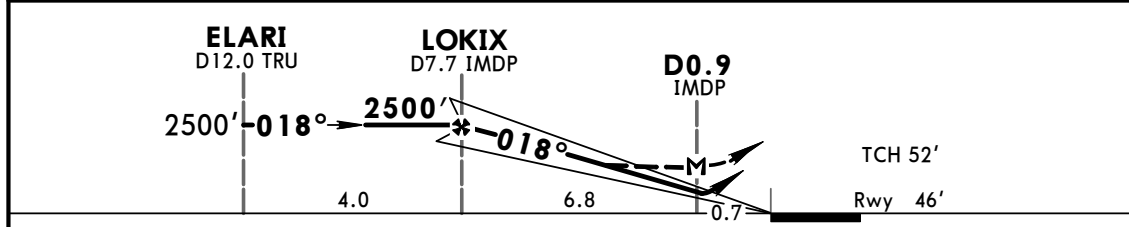
All Rwy's

	Take-Off Alternate Apt. Filed	Take-Off Alternate Apt. Not Filed
1 Eng	1600m or Higher Available Landing Minimums	
2 Eng	1 hr alternate (1 Eng Inop) 1600m	Available Landing Minimums
3 or more Eng	2 hr alternate (1 Eng Inop) 800m	

*TRUJILLO Approach 118.7			*TRUJILLO Tower 118.7		
LOC IMDP 109.7	Final Apch Crs 018°	Minimum Alt LOKIX 2500' (2454')	ILS DA(H) (CONDITIONAL) 295' (249')	Apt Elev 128'	Rwy 46'
MISSED APCH: Climb on runway heading to D1.1 IMDP, turn LEFT climbing to 3000' direct to ELARI and hold. MAX 185 KT until completing turn.					<p>MSA TRU VOR</p>
Alt Set: hPa Rwy Elev: 2 hPa Trans level: By ATC Trans alt: 4500' 1. DME required. 2. CAUTION: High terrain North & East of Airport.					



IMDP DME	5.0	4.0	3.0	2.0
ALTITUDE	1630'	1310'	1000'	680'

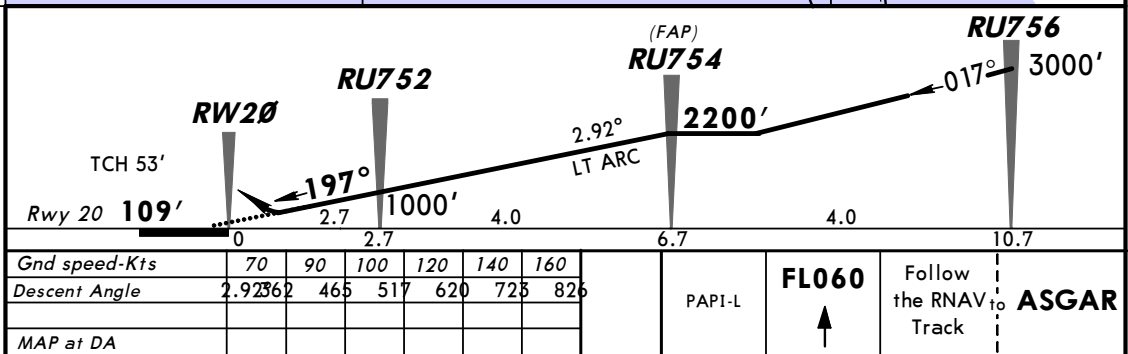
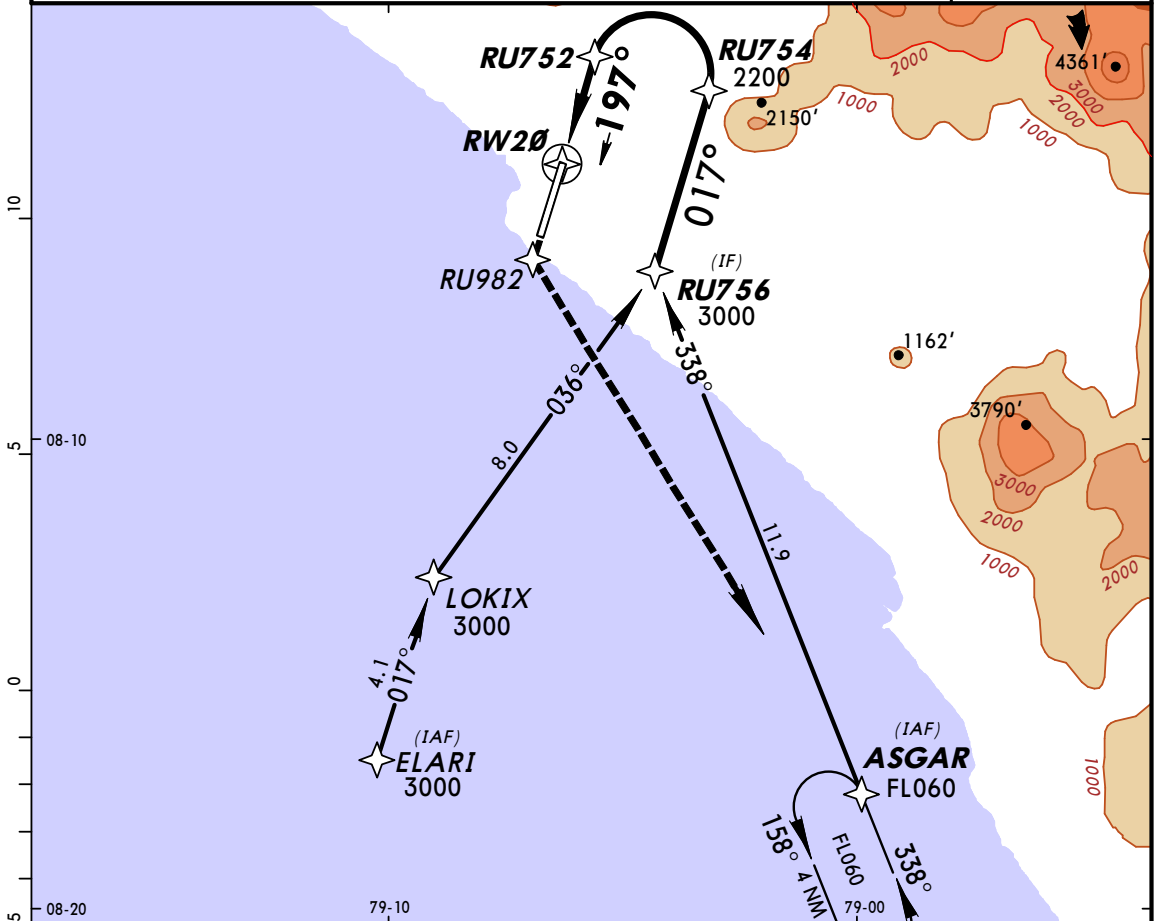


Gnd speed-Kts	70	90	100	120	140	160	ALS PAPI-L	↑ on Rwy hdg	D1.1 IMDP
GS	3.00°	372	478	531	637	849			
MAP at D0.9 IMDP									

STRAIGHT-IN LANDING RWY 02				CEILING REQUIRED		CIRCLE-TO-LAND	
Missed apch climb gradient mim 3.0% DA(H) 295' (249')		Missed apch climb gradient mim 2.5% DA(H) 381' (335')		LOC (GS out) MDA(H) 390' (344')		DAY	NIGHT
FULL	ALS out	FULL	ALS out	CEILING-VISIBILITY	Max Kts	MDA(H)	CEIL-VIS
A					100	790' (662')	800'-2.8 km
B	300'-	300'-	400'-	400'-	135		
C	1000m	1600m	1000m	1600m	160	1380' (1252')	1400'-4.6 km
D					185	2550' (2422')	2500'-4.6 km

BRIEFING STRIP™

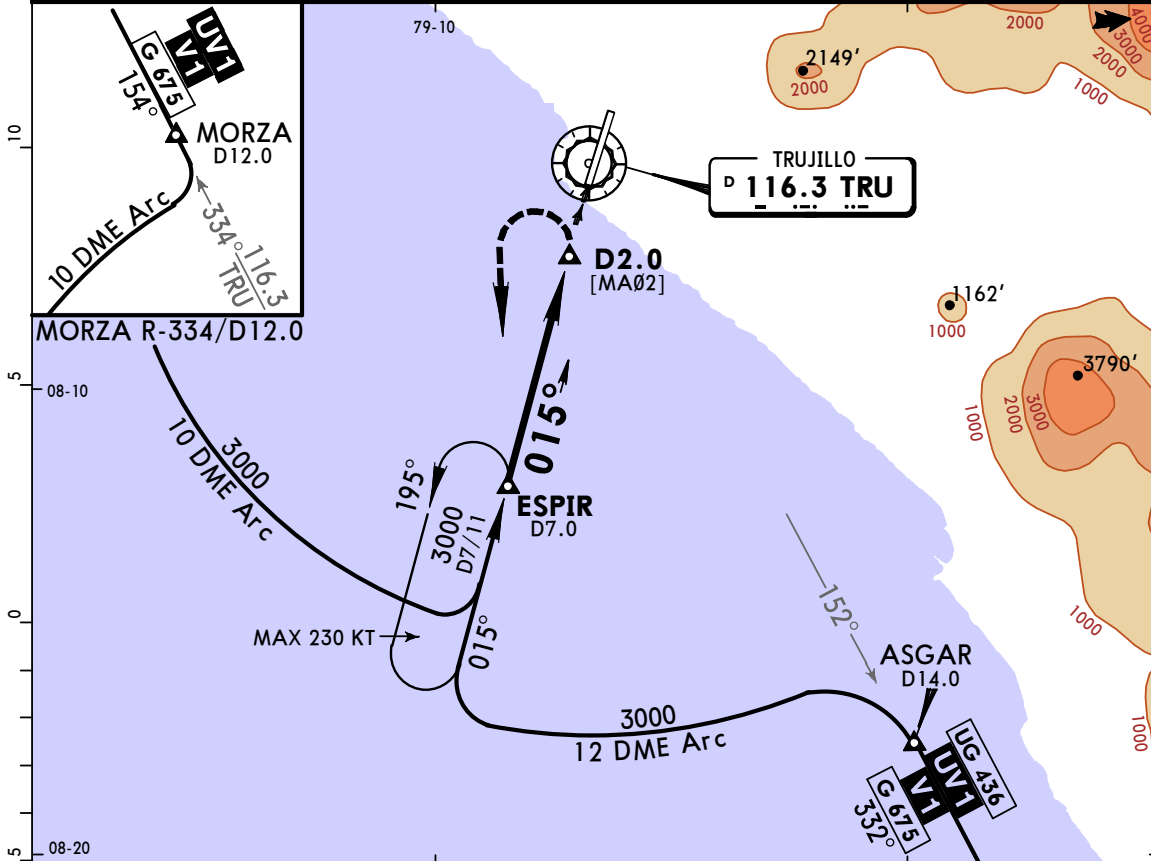
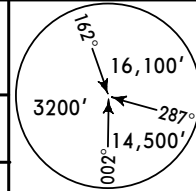
*TRUJILLO Approach 118.7				*TRUJILLO TOWER 118.7	
RNAV	Final Apch Crs 197°	Minimum Alt RU754 2200' (2091')	RNP 0.30 DA(H) 600' (491')	Apt Elev 128'	Rwy 20 109'
MISSED APCH: Climb to FL060 following the RNAV track to ASGAR and enter the holding pattern. Follow ATC instructions. Note: Procedure considers Rwy 20 displaced threshold.					
Alt Set: hPa Rwy Elev: 4 hPa Trans level: By ATC Trans alt: 4500' 1. SPECIAL AIRCRAFT & AIRCREW AUTHORIZATION REQUIRED. 2. RF required. 3. For uncompensated Baro-VNAV systems, procedure not authorized below 5°C (41°F) or above 54°C (129°F).					
					<p>MSA RW20</p>



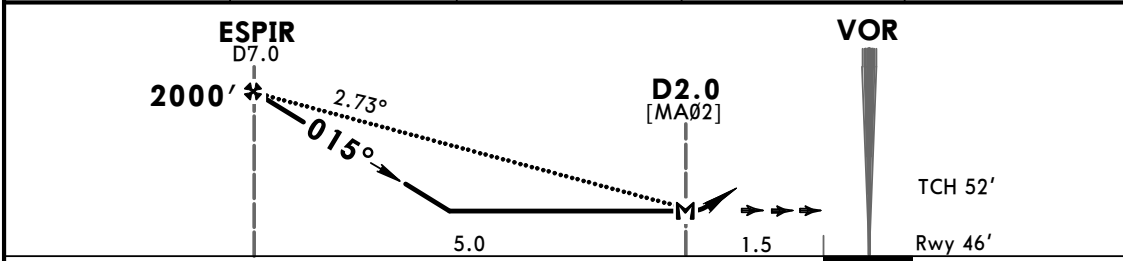
STRAIGHT-IN LANDING RWY 20 RNP 0.30 DA(H) 600' (491')				CIRCLE-TO-LAND	
A	NOT APPLICABLE				Max Kts
B	NOT APPLICABLE				A
C	2000m				C
D	NOT APPLICABLE				D

PANS OPS

*TRUJILLO Approach 118.7			*TRUJILLO Tower 118.7		
VOR TRU 116.3	Final Apch Crs 015°	Minimum Alt ESPIR 2000' (1954')	MDA(H) 550' (504')	Apt Elev 128'	Rwy 46'
MISSED APCH: Immediate climbing LEFT turn to 3000' to ESPIR D7.0 and hold. MAX 160 KT until completing turn.					
Alt Set: hPa			Rwy Elev: 2 hPa	Trans level: By ATC	Trans alt: 4500'
1. DME REQUIRED. 2. CAUTION: High terrain North & East of Airport.					MSA TRU VOR



TRU DME	6.0	5.0	4.0	3.0
ALTITUDE	1700'	1414'	1129'	843'

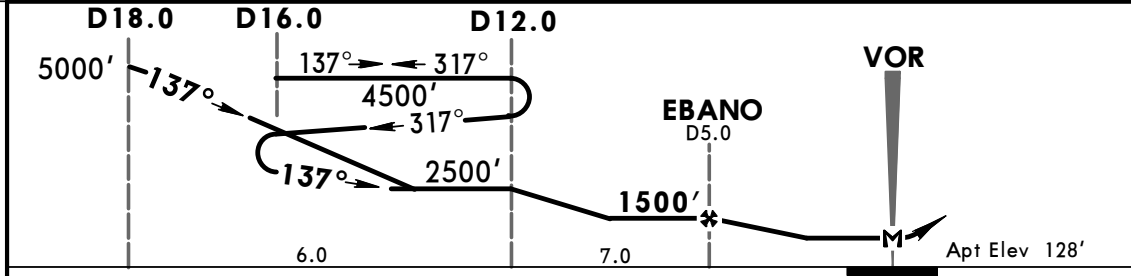
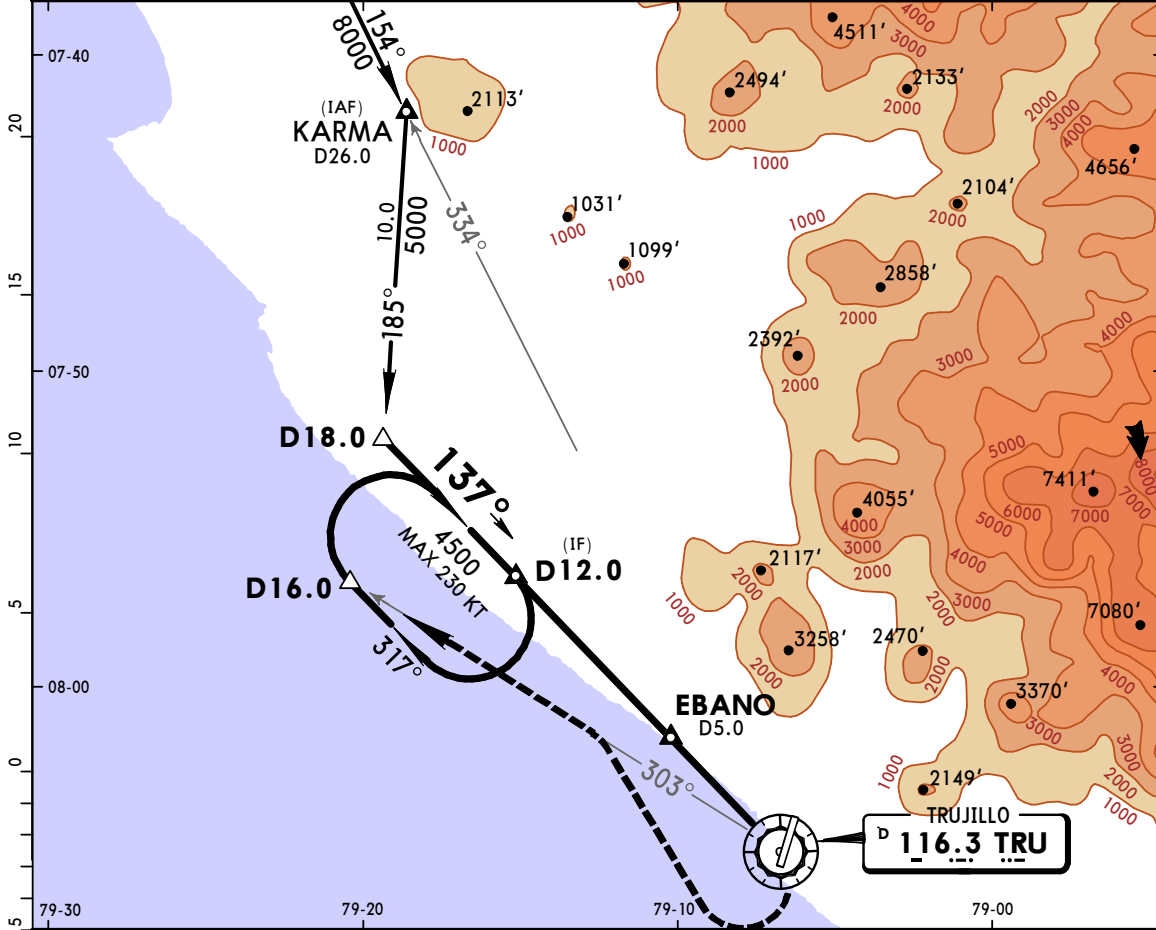


Gnd speed-Kts	70	90	100	120	140	160	ALS PAPI-L	3000'	LT	ESPIR
Descent Angle	2.73°	338	435	483	579	676				
MAP at D2.0										

STRAIGHT-IN LANDING RWY 02 CEILING REQUIRED				CIRCLE-TO-LAND	
MDA(H) 550' (504')					
CEILING-VISIBILITY			ALS out	DAY	NIGHT
A	500' - 2.8 km		Max Kts	MDA(H)	CEIL-VIS
B			100	900' (772')	900' - 3.5 km
C			135	1200' (1072')	1200' - 4.5 km
D	NOT APPLICABLE		160	NOT APPLICABLE	NOT APPLICABLE

PANS OPS

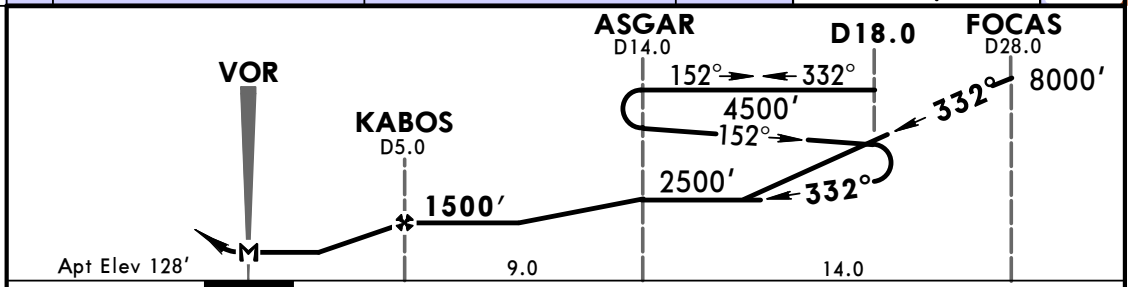
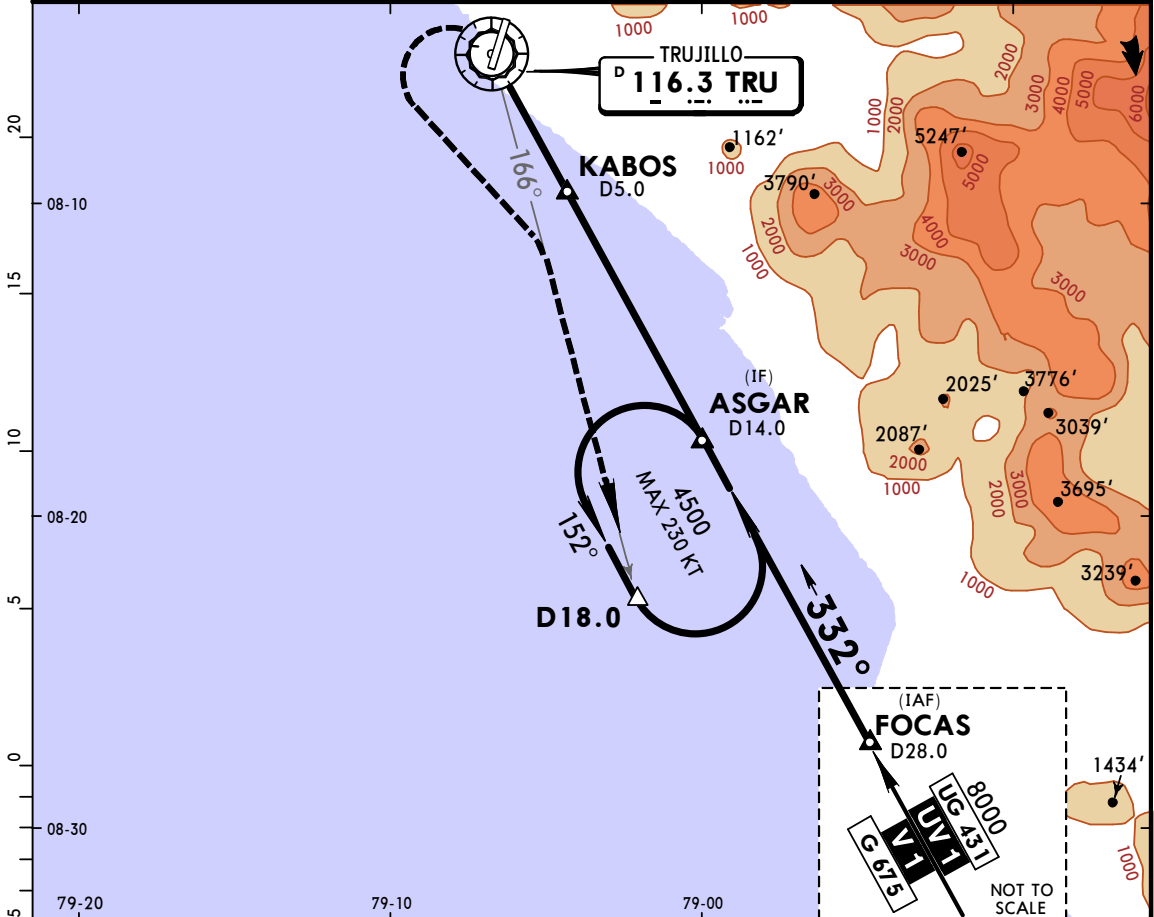
*TRUJILLO Approach 118.7			*TRUJILLO Tower 118.7		
VOR TRU 116.3	Final Apch Crs 137°	Minimum Alt EBANO 1500' (1372')	MDA(H) Refer to Minimums	Apt Elev 128'	
MISSED APCH: Climbing RIGHT turn and proceed outbound via TRU VOR R-303 to D16.0, then RIGHT turn to D12.0 and hold.					
Alt Set: hPa Apt Elev: 5 hPa Trans level: By ATC Trans alt: 4500' 1. DME REQUIRED. 2. CAUTION: High terrain North & East of Airport.					



MAP at VOR				Lighting - Refer to Airport Chart	TRU via 116.3 R-303 D16.0
------------	--	--	--	-----------------------------------	-------------------------------------

PANS OPS	CEILING REQUIRED		CIRCLE-TO-LAND		NA
	Max Kts	DAY	NIGHT		
	A 100	MDA(H) _____ CEIL-VIS _____			
	B 135	900' (772')	900' - 3.5 km		
	C 160	1200' (1072')	1200' - 4.5 km		
D	NOT APPLICABLE				

*TRUJILLO Approach				*TRUJILLO Tower	
118.7				118.7	
VOR TRU 116.3	Final Apch Crs 332°	Minimum Alt KABOS 1500' (1372')	MDA(H) Refer to Minimums	Apt Elev 128'	
MISSED APCH: Climbing LEFT turn and proceed outbound via TRU VOR R-166 to D18.0, then LEFT turn to ASGAR INT and hold.					
Alt Set: hPa Apt Elev: 5 hPa Trans level: By ATC Trans alt: 4500' 1. DME REQUIRED. 2. CAUTION: High terrain North & East of Airport.					



				Lighting - Refer to Airport Chart	TRU via 116.3 R-166	D18.0
--	--	--	--	-----------------------------------	---	--------------

CEILING REQUIRED		CIRCLE-TO-LAND	
	Max Kts	DAY	NIGHT
A	100	MDA(H) 900' (772')	CEIL-VIS 900'-3.5 km
B	135		
C	160	MDA(H) 1200' (1072')	CEIL-VIS 1200'-4.5 km
D		NOT APPLICABLE	
NA			

PANS OPS